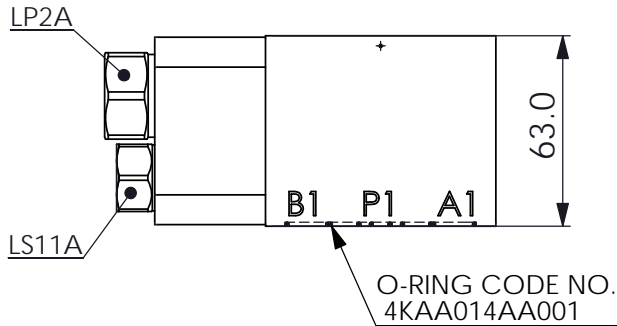
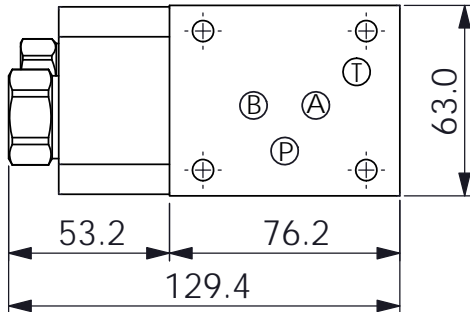
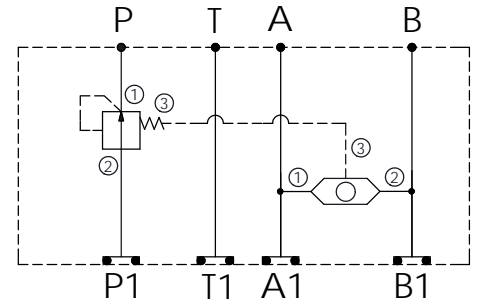


Ordering Code: MH05KPR-X-Y-Z 03
Stack Height : 63.0mm



UNIT:mm



TECHNICAL DATA

Aluminum Body Pressure Rating: 250 bar

Ductile Iron

Body Pressure Rating: 350 bar

Rated flow: 80 l/min

Cartridge Valve:

Refer to LP2A-X-Y-Z

LS11A-X-Y-Z

* Refer to Winner Cartridge Valves Catalog.

Aluminum	1.0 kg(WITHOUT VALVES)
	1.35 kg(INCLUDE VALVES)
Ductile Iron	2.85 kg(WITHOUT VALVES)
	3.2 kg(INCLUDE VALVES)

* If you need the special specification.
Please contact us.

--	--

Y	SELECTION FOR SHUTTLE VALVE	
11A3	CAVITY ONLY(WITHOUT VALVE)	
LS3N	LS11A33NN(10LPM,350bar)	

X	SELECTION FOR LOGIC ELEMENT	
2A3	CAVITY ONLY(WITHOUT VALVE)	
LP35	LP2A3035N(120LPM,3.5bar)	
LP70	LP2A3070N(120LPM,7.0bar)	
LP100	LP2A30100N(120LPM,10.0bar)	
LP140	LP2A30140N(120LPM,14.0bar)	

Z	BODY MATERIAL	
A	HIGH-STRENGTH ALUMINUM	
S	DUCTILE IRON	