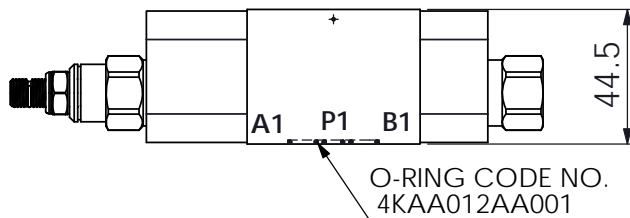
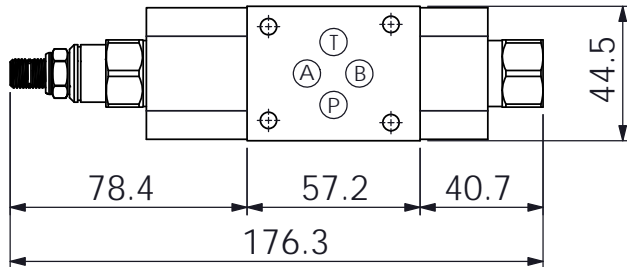
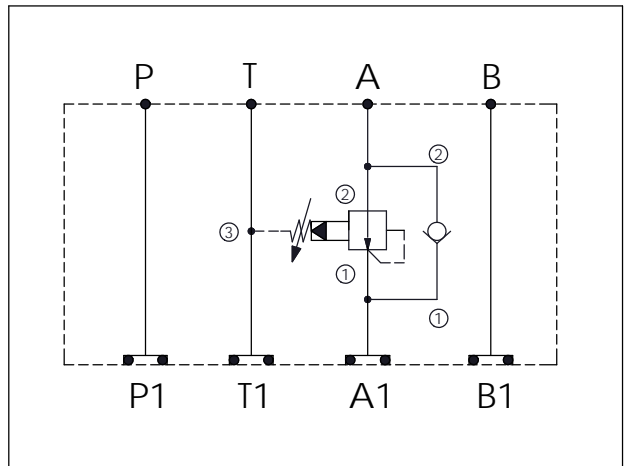
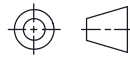


## ISO 03 SANDWICH MANIFOLD

Ordering Code: <b>MH03PAC-X-Y-Z01</b>
Stack Height : 44.5mm



UNIT:mm



### TECHNICAL DATA

Aluminum Body Pressure Rating: 250 bar  
 Ductile Iron Body Pressure Rating: 350 bar

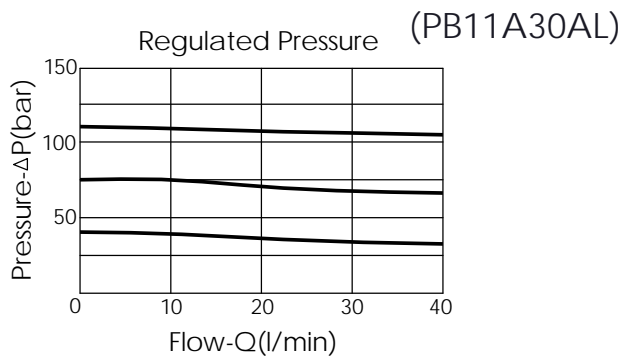
Rated flow: 40 l/min

Cartridge Valve:  
 Refer to PB11A-X-Y-Z  
 CV13A-X-Y-Z

\* Refer to Winner Cartridge Valves Catalog.

Aluminum	0.46 kg(WITHOUT VALVES) 0.71 kg(INCLUDE VALVES)
Ductile Iron	1.33 kg(WITHOUT VALVES) 1.58 kg(INCLUDE VALVES)

\* If you need the special specification. Please contact us.



<b>X</b>	<b>SELECTION FOR A PORT CONTROL</b>	
<b>11A3</b>	CAVITY ONLY(WITHOUT VALVE)	
<b>PB0A</b>	PB11A30AL (40LPM , 7-210bar)	

<b>Y</b>	<b>SELECTION FOR CHECK VALVE</b>	
<b>13A2</b>	CAVITY ONLY(WITHOUT VALVE)	
<b>CP00</b>	CP13A2H00N (PLUG ONLY)	
<b>CV20</b>	CV13A2020N (80LPM , 2.0bar)	

<b>Z</b>	<b>BODY MATERIAL</b>	
<b>A</b>	HIGH-STRENGTH ALUMINUM	
<b>S</b>	DUCTILE IRON	