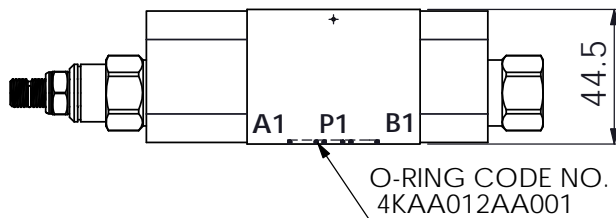
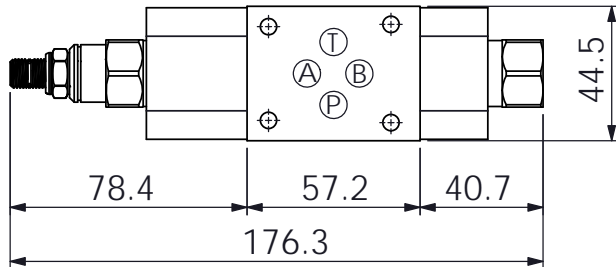
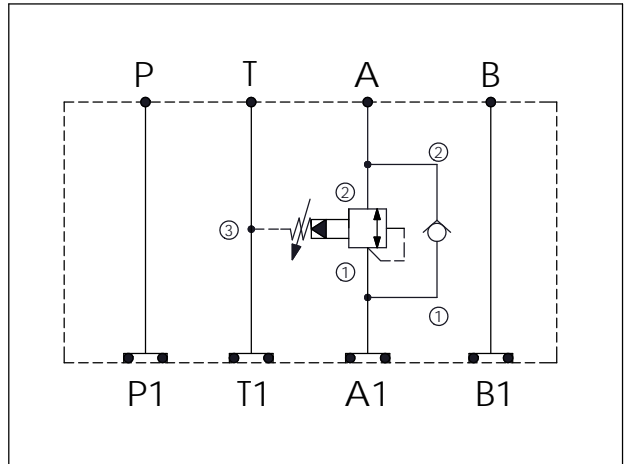
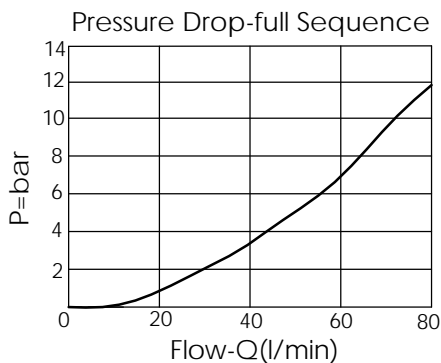
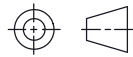


ISO 03 SANDWICH MANIFOLD

Ordering Code: MH03PAC-X-Y-Z01
Stack Height : 44.5mm



UNIT:mm



TECHNICAL DATA

Aluminum Body Pressure Rating: 250 bar
 Ductile Iron Body Pressure Rating: 350 bar

Rated flow: 40 l/min

Cartridge Valve:
 Refer to SP11A-X-Y-Z
 CV13A-X-Y-Z

* Refer to Winner Cartridge Valves Catalog.

Aluminum	0.46 kg(WITHOUT VALVES) 0.71 kg(INCLUDE VALVES)
Ductile Iron	1.33 kg(WITHOUT VALVES) 1.58 kg(INCLUDE VALVES)

* If you need the special specification. Please contact us.

X	SELECTION FOR A PORT CONTROL	
11A3	CAVITY ONLY(WITHOUT VALVE)	
SP0A	SP11A30AL (60LPM , 7-210bar)	

Y	SELECTION FOR CHECK VALVE	
13A2	CAVITY ONLY(WITHOUT VALVE)	
CV20	CV13A2120N (60LPM , 2.0bar)	

Z	BODY MATERIAL	
A	HIGH-STRENGTH ALUMINUM	
S	DUCTILE IRON	