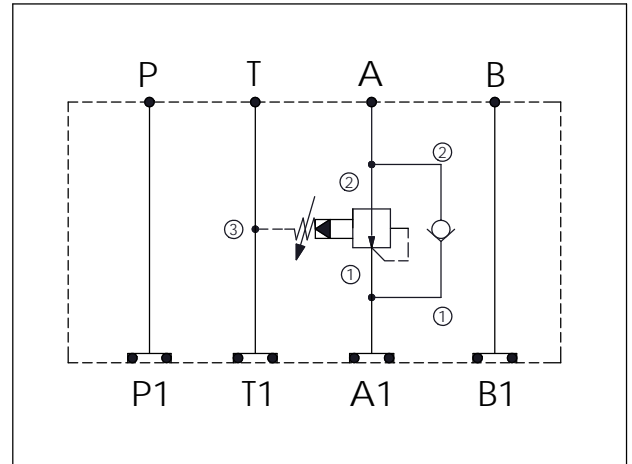


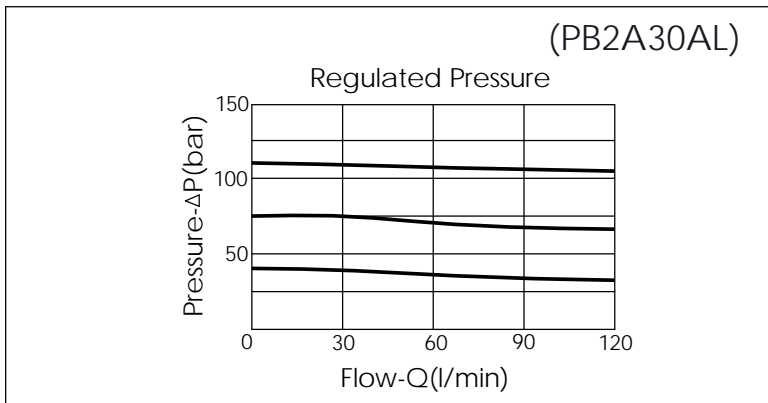
ISO 05 SANDWICH MANIFOLD

Ordering Code:	MH05PAC-X-Y-Z03
Stack Height :	63.0mm

UNIT:mm



TECHNICAL DATA	
Aluminum Body Pressure Rating:	250 bar
Ductile Iron Body Pressure Rating:	350 bar
Rated flow:	80 l/min
Cartridge Valve:	Refer to PB2A-X-Y-Z CV5A-X-Y-Z
* Refer to Winner Cartridge Valves Catalog.	
Aluminum	0.92 kg(WITHOUT VALVES) 1.42 kg(INCLUDE VALVES)
Ductile Iron	2.65 kg(WITHOUT VALVES) 3.15 kg(INCLUDE VALVES)
* If you need the special specification. Please contact us.	



X	SELECTION FOR A PORT CONTROL	
2A3	CAVITY ONLY(WITHOUT VALVE)	
PB0A	PB2A30AL (80LPM , 7-210bar)	

Y	SELECTION FOR CHECK VALVE	
5A2	CAVITY ONLY(WITHOUT VALVE)	
CP00	CP5A2H00N (PLUG ONLY)	
CV20	CV5A2020N (160LPM , 2.0bar)	

Z	BODY MATERIAL	
A	HIGH-STRENGTH ALUMINUM	
S	DUCTILE IRON	