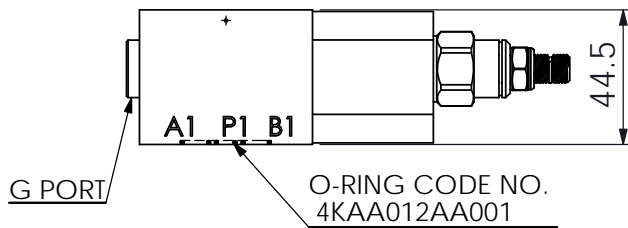
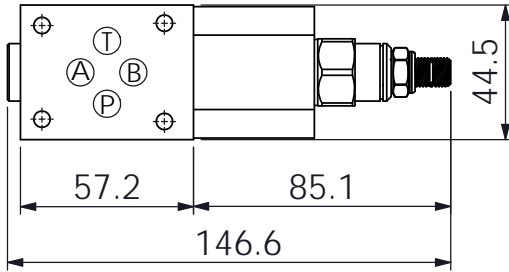
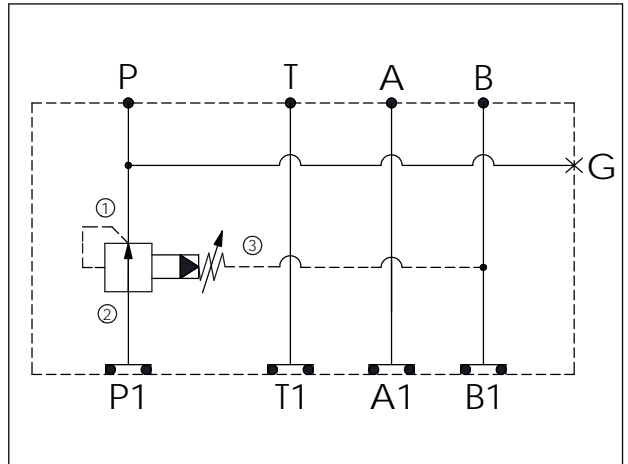
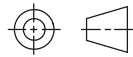


Ordering Code: **MH03PAP-X-Y-Z 01**
 Stack Height : 44.5mm



UNIT:mm



TECHNICAL DATA

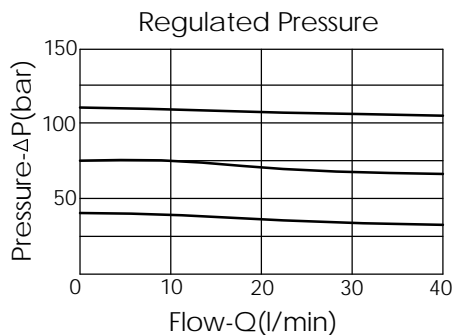
Aluminum Body Pressure Rating: 250 bar
 Ductile Iron Body Pressure Rating: 350 bar

Rated flow: 40 l/min

Cartridge Valve:
 Refer to PB11A-X-Y-Z
 * Refer to Winner Cartridge Valve Catalog.

Aluminum	0.45 kg(WITHOUT VALVE)
	0.6 kg(INCLUDE VALVE)
Ductile Iron	1.2 kg(WITHOUT VALVE)
	1.35 kg(INCLUDE VALVE)

* If you need the special specification. Please contact us.



X SELECTION FOR A PORT CONTROL

11A3	CAVITY ONLY(WITHOUT VALVE)
PB0A	PB11A30AL (40LPM ,7-210bar)

Y SELECTION FOR G PORT

G02	G 1/4"(Metric)
N02	NPT 1/4"(U.S. Units)

Z BODY MATERIAL

A	HIGH-STRENGTH ALUMINUM
S	DUCTILE IRON