

Ordering Code: **MH03PBC-X-Y-Z01**

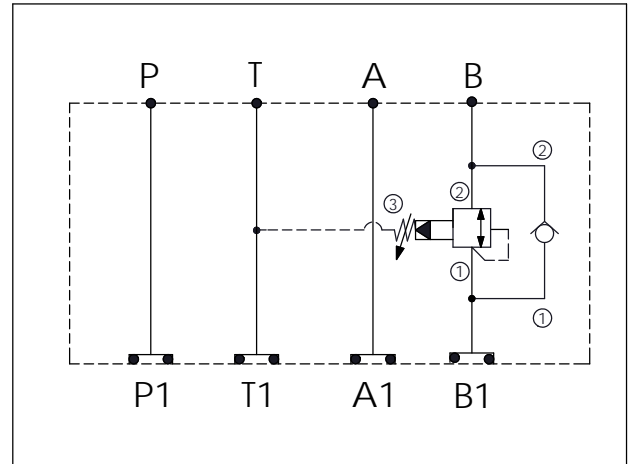
Stack Height : 44.5mm

Dimensions: 44.5mm (height), 40.7mm (P1 to T1), 57.2mm (T1 to A1), 78.4mm (A1 to B1), 176.3mm (total length).

Ports: P, T, A, B (top view); P1, T1, A1, B1 (bottom view).

O-RING CODE NO. 4KAA012AA001

UNIT:mm



TECHNICAL DATA

Aluminum Body Pressure Rating: 250 bar
 Ductile Iron Body Pressure Rating: 350 bar

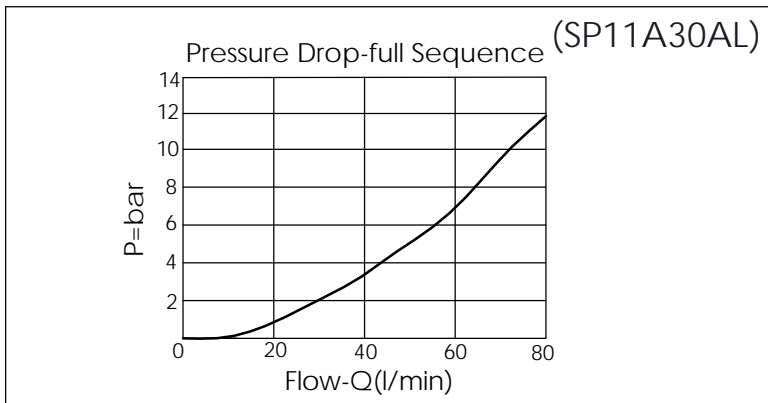
Rated flow: 40 l/min

Cartridge Valve:
 Refer to CV13A-X-Y-Z
 SP11A-X-Y-Z

* Refer to Winner Cartridge Valves Catalog.

Aluminum	0.46 kg(WITHOUT VALVES) 0.71 kg(INCLUDE VALVES)
Ductile Iron	1.33 kg(WITHOUT VALVES) 1.58 kg(INCLUDE VALVES)

* If you need the special specification. Please contact us.



X	SELECTION FOR CHECK VALVE	
13A2	CAVITY ONLY(WITHOUT VALVE)	
CV20	CV13A2120N (60LPM , 2.0bar)	

Y	SELECTION FOR B PORT CONTROL	
11A3	CAVITY ONLY(WITHOUT VALVE)	
SP0A	SP11A30AL (60LPM , 7-210bar)	

Z	BODY MATERIAL	
A	HIGH-STRENGTH ALUMINUM	
S	DUCTILE IRON	