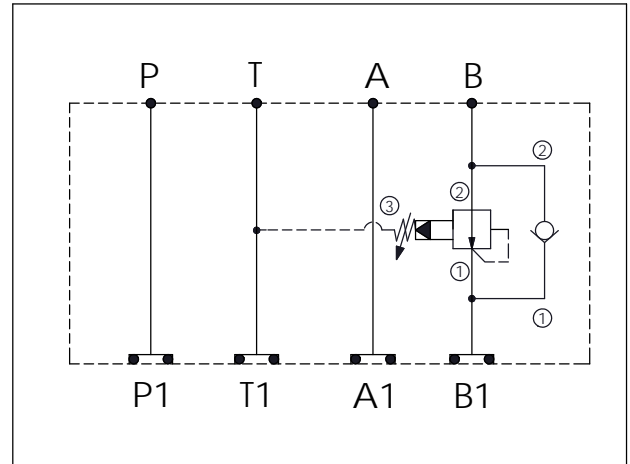


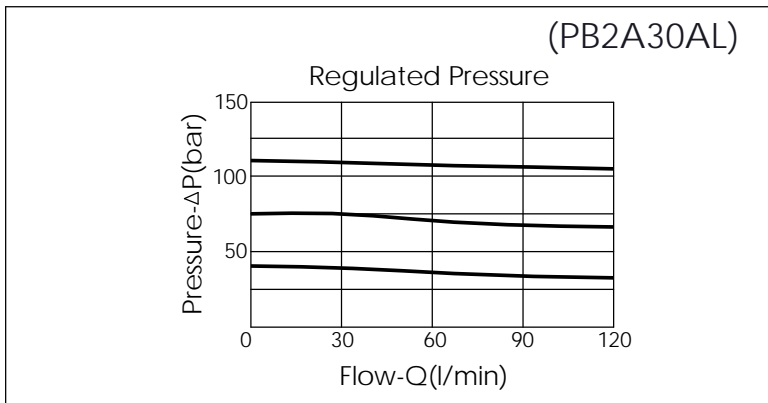
|                |                        |
|----------------|------------------------|
| Ordering Code: | <b>MH05PBC-X-Y-Z03</b> |
| Stack Height : | 63.0mm                 |

UNIT:mm



| TECHNICAL DATA   |  |
|--|--|
| Aluminum Body Pressure Rating:                                 | 250 bar  |
| Ductile Iron Body Pressure Rating:                             | 350 bar  |
| Rated flow:  | 80 l/min   |
| Cartridge Valve:   | Refer to CV5A-X-Y-Z<br>PB2A-X-Y-Z                  |
| * Refer to Winner Cartridge Valves Catalog.                    |  |
| Aluminum   | 0.92 kg(WITHOUT VALVES)<br>1.42 kg(INCLUDE VALVES) |
| Ductile Iron   | 2.65 kg(WITHOUT VALVES)<br>3.15 kg(INCLUDE VALVES) |
| * If you need the special specification.<br>Please contact us. |  |



| X           | SELECTION FOR CHECK VALVE   |
|-------------|-----------------------------|
| <b>5A2</b>  | CAVITY ONLY(WITHOUT VALVE)  |
| <b>CP00</b> | CP5A2H00N (PLUG ONLY)       |
| <b>CV20</b> | CV5A2020N (160LPM , 2.0bar) |

| Y           | SELECTION FOR B PORT CONTROL |
|-------------|------------------------------|
| <b>2A3</b>  | CAVITY ONLY(WITHOUT VALVE)   |
| <b>PB0A</b> | PB2A30AL (80LPM , 7-210bar)  |
|             |                              |
|             |                              |
|             |                              |
|             |                              |

| Z        | BODY MATERIAL          |
|----------|------------------------|
| <b>A</b> | HIGH-STRENGTH ALUMINUM |
| <b>S</b> | DUCTILE IRON           |
|          |                        |
|          |                        |
|          |                        |
|          |                        |