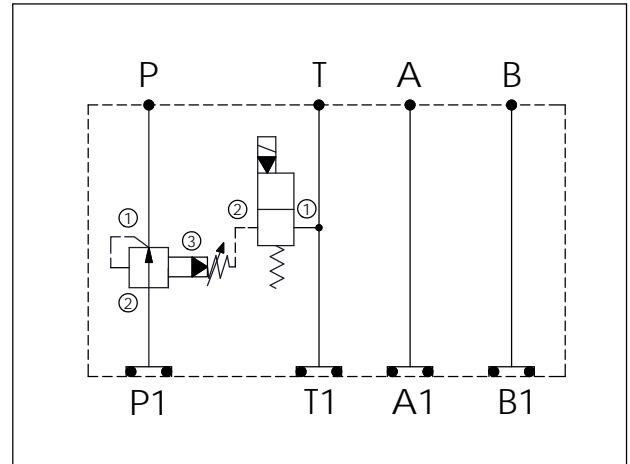


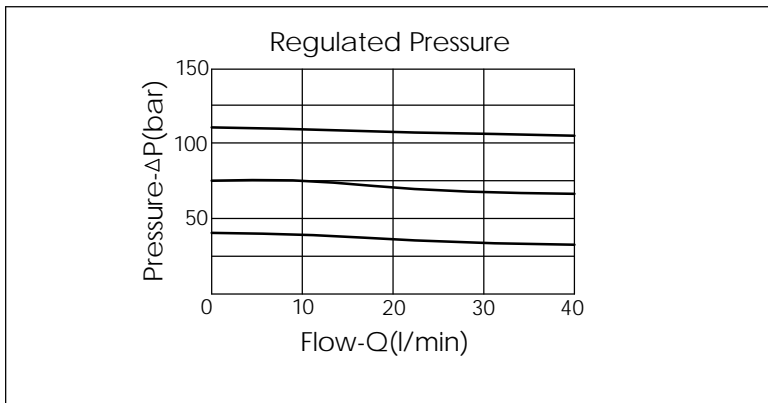
| | |
|----------------|-------------------------|
| Ordering Code: | MH03PPE-X-Y-Z 11 |
| Stack Height : | 44.5mm |

Technical drawing showing dimensions: 87.2, 57.2, 118.2, 262.5, and 44.5. Port locations are marked with circled letters A, B, P, T. A second drawing shows port locations A1, P1, B1 and an O-RING CODE NO. 4KAA012AA001.

UNIT:mm



| TECHNICAL DATA | |
|---|--|
| Aluminum Body Pressure Rating: | 250 bar |
| Ductile Iron Body Pressure Rating: | 350 bar |
| Rated flow: | 40 l/min |
| Cartridge Valve: | Refer to PB11A-X-Y-Z EP08W-X-Y-Z |
| * Refer to Winner Cartridge Valve Catalog. | |
| Aluminum | 0.65 kg(WITHOUT VALVES) 0.95 kg(INCLUDE VALVES ,WITHOUT COIL) |
| * If you need the special specification. Please contact us. | |



| | |
|-------------|-------------------------------------|
| X | SELECTION FOR P PORT CONTROL |
| 11A3 | CAVITY ONLY (WITHOUT VALVE) |
| PB0A | PB11A30AL (40 LPM , 7-210bar) |
| | |
| | |

| Y | SELECTION FOR SOLENOID VALVES (REFER TO EP08W-X-Y-Z) |
|--|--|
| 08W2 | CAVITY ONLY(WITHOUT VALVE) |
| EP01 | EP08W2A01N05 , 40LPM,350bar (NORMALLY CLOSED,WITHOUT COIL) |
| EP02 | EP08W2A02N05 , 40LPM,350bar (NORMALLY OPEN,WITHOUT COIL) |
| EP01M | EP08W2A01M05 , 40LPM,350bar(NORMALLY CLOSED WITH KNOB STYLE MANUAL OVERRIDE,WITHOUT COIL) |
| EP02P | EP08W2A02P05 , 40LPM,350bar(NORMALLY OPEN WITH PUSH STYLE MANUAL OVERRIDE,WITHOUT COIL) |
| COIL MUST BE ORDERED SEPARATELY (REFER TO EC-04W-X-Y-Z) | |

| Z | BODY MATERIAL |
|----------|------------------------|
| A | HIGH-STRENGTH ALUMINUM |
| | |
| | |
| | |
| | |