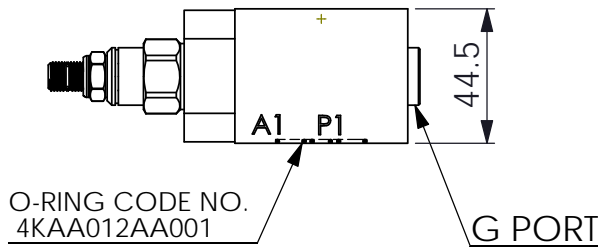
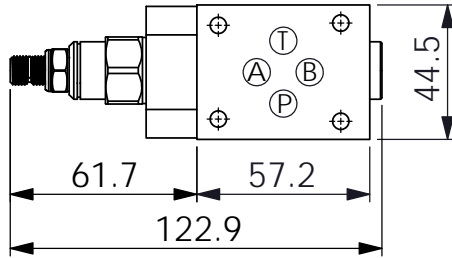
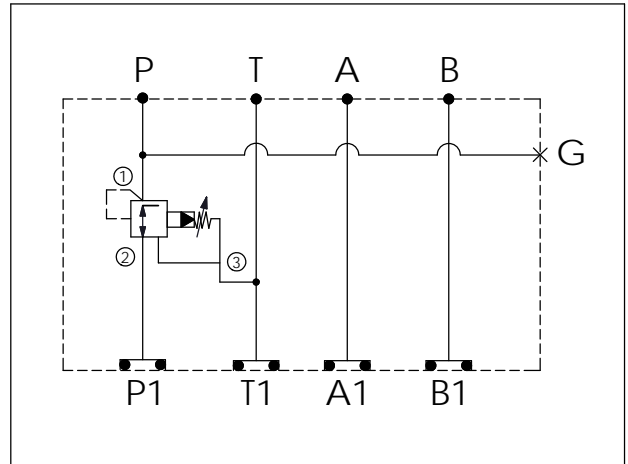
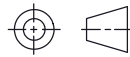


Ordering Code:	MH03PPW-X-Y-Z 01
Stack Height :	44.5mm



UNIT:mm



TECHNICAL DATA

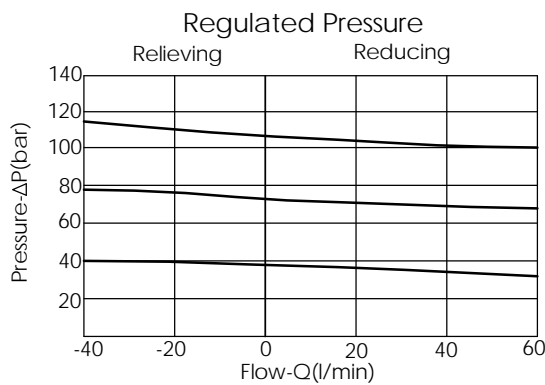
Aluminum Body Pressure Rating: 250 bar
 Ductile Iron Body Pressure Rating: 350 bar

Rated flow: 40 l/min

Cartridge Valve:
 Refer to PP11A-X-Y-Z
 * Refer to Winner Cartridge Valve Catalog.

Aluminum	0.32 kg(WITHOUT VALVE)
	0.47 kg(INCLUDE VALVE)
Ductile Iron	0.9 kg(WITHOUT VALVE)
	1.05 kg(INCLUDE VALVE)

* If you need the special specification. Please contact us.



X SELECTION FOR P PORT CONTROL

11A3	CAVITY ONLY(WITHOUT VALVE)
PP0A	PP11A30AL(40LPM,7.0~210bar) (Pilot Operated Reducing/Relieving)
PP0B	PP11A30BL(40LPM,3.5~105bar) (Pilot Operated Reducing/Relieving)

Y SELECTION FOR G PORT

Y	SELECTION FOR G PORT
G02	G 1/4"(Metric)
N02	NPT 1/4"(U.S. Units)

Z BODY MATERIAL

Z	BODY MATERIAL
A	HIGH-STRENGTH ALUMINUM
S	DUCTILE IRON