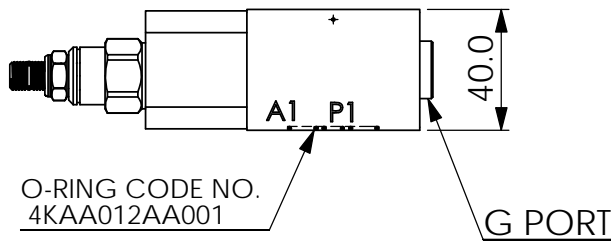
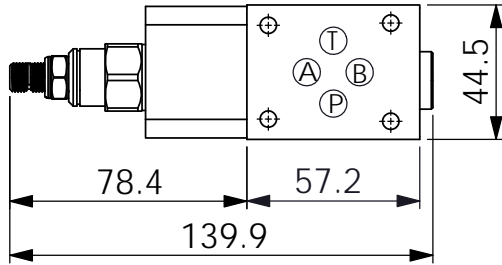
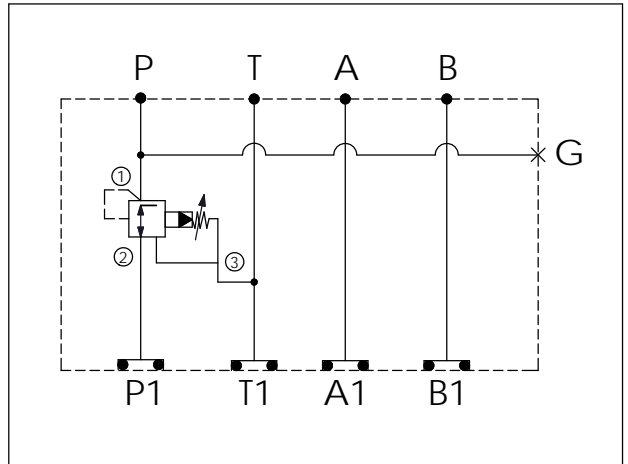
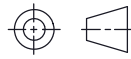


Ordering Code: **MH03PPW-X-Y-Z 02**  
 Stack Height : 40.0mm



UNIT:mm



### TECHNICAL DATA

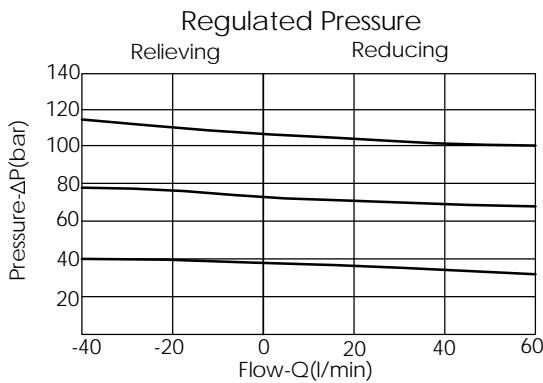
Aluminum Body Pressure Rating: 250 bar  
 Ductile Iron Body Pressure Rating: 350 bar

Rated flow: 40 l/min

Cartridge Valve:  
 Refer to PP11A-X-Y-Z  
 \* Refer to Winner Cartridge Valves Catalog.

Aluminum	0.34 kg(WITHOUT VALVE) 0.5 kg(INCLUDE VALVE)
Ductile Iron	1.0 kg(WITHOUT VALVE) 1.16 kg(INCLUDE VALVE)

\* If you need the special specification. Please contact us.



### X SELECTION FOR P PORT CONTROL

<b>11A3</b>	CAVITY ONLY(WITHOUT VALVE)	
<b>PP0A</b>	PP11A30AL(40LPM,7.0~210bar) (Pilot Operated Reducing/Relieving)	
<b>PP0B</b>	PP11A30BL(40LPM,3.5~105bar) (Pilot Operated Reducing/Relieving)	

### Y SELECTION FOR G PORT

<b>Y</b>		
<b>G02</b>	G 1/4"(Metric)	
<b>N02</b>	NPT 1/4"(U.S. Units)	

### Z BODY MATERIAL

<b>Z</b>		
<b>A</b>	HIGH-STRENGTH ALUMINUM	
<b>S</b>	DUCTILE IRON	