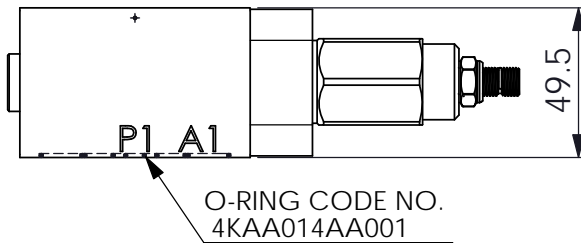
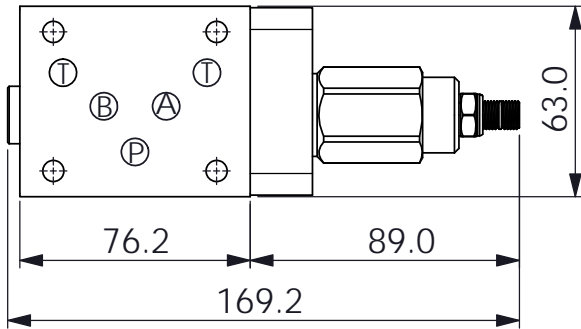
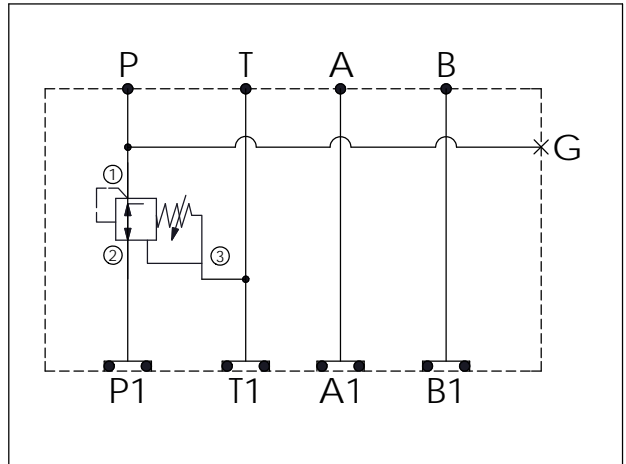
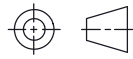


ISO 05 SANDWICH MANIFOLD

Ordering Code:	MH05PPW-X-Y-Z01
Stack Height :	49.5mm



UNIT:mm



TECHNICAL DATA

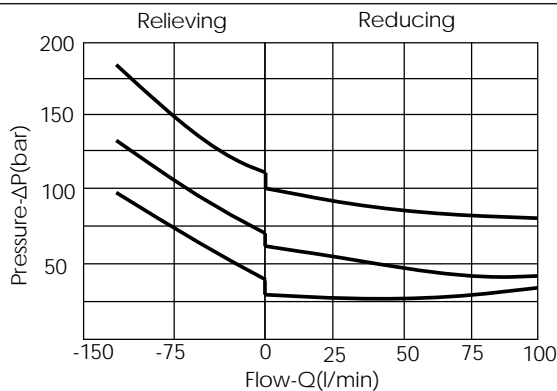
Aluminum Body Pressure Rating: 250 bar
 Ductile Iron Body Pressure Rating: 350 bar

Rated flow: 80 l/min

Cartridge Valve:
 Refer to PD2A-X-Y-Z
 * Refer to Winner Cartridge Valve Catalog.

Aluminum	0.65 kg(WITHOUT VALVE) 1.0 kg(INCLUDE VALVE)
Ductile Iron	1.9 kg(WITHOUT VALVE) 2.25 kg(INCLUDE VALVE)

* If you need the special specification. Please contact us.



X SELECTION FOR P PORT CONTROL

2A3	CAVITY ONLY (WITHOUT VALVE)
PD0A	PD2A30AL (85 LPM , 50-210bar)

Y SELECTION FOR G PORT

G02	G 1/4"(Metric)
N02	NPT 1/4"(U.S. Units)

Z BODY MATERIAL

A	HIGH-STRENGTH ALUMINUM
S	DUCTILE IRON