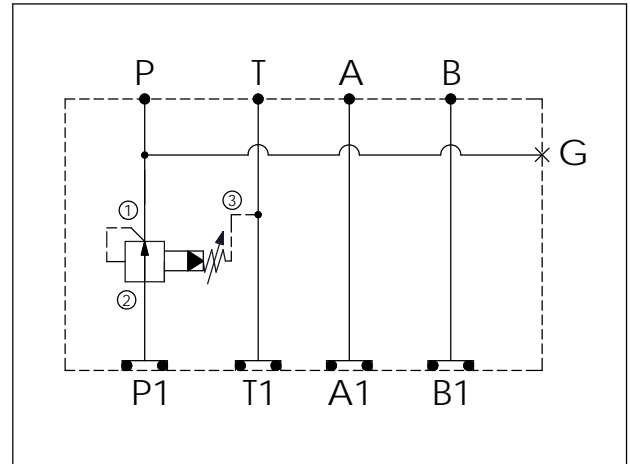


Ordering Code: **MH05PPW-X-Y-Z 01**

Stack Height : 49.5mm

UNIT:mm



TECHNICAL DATA

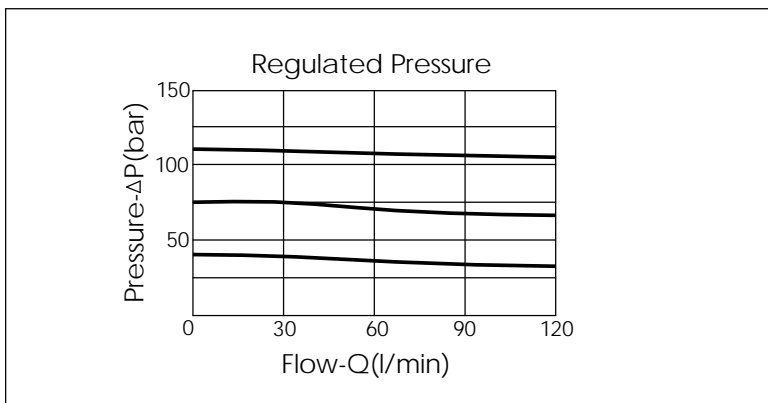
Aluminum Body Pressure Rating: 250 bar
 Ductile Iron Body Pressure Rating: 350 bar

Rated flow: 80 l/min

Cartridge Valve:
 Refer to PB2A-X-Y-Z
 * Refer to Winner Cartridge Valve Catalog.

Aluminum	0.65 kg(WITHOUT VALVE)
	0.93 kg(INCLUDE VALVE)
Ductile Iron	1.9 kg(WITHOUT VALVE)
	2.25 kg(INCLUDE VALVE)

* If you need the special specification. Please contact us.



X	SELECTION FOR P PORT CONTROL	
2A3	CAVITY ONLY(WITHOUT VALVE)	
PB0A	PB2A30AL(80LPM,7-210bar) (Pilot Operated Reducing)	

Y	SELECTION FOR G PORT	
G02	G 1/4"(Metric)	
N02	NPT 1/4"(U.S. Units)	

Z	BODY MATERIAL	
A	HIGH-STRENGTH ALUMINUM	
S	DUCTILE IRON	