

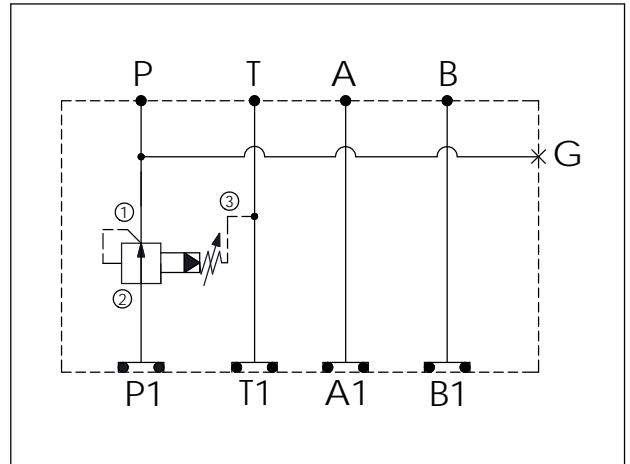
## ISO 05 SANDWICH MANIFOLD

Ordering Code: **MH05PPW-X-Y-Z 21**

Stack Height : 49.5mm

O-RING CODE NO. 4KAA014AA001

UNIT:mm



### TECHNICAL DATA

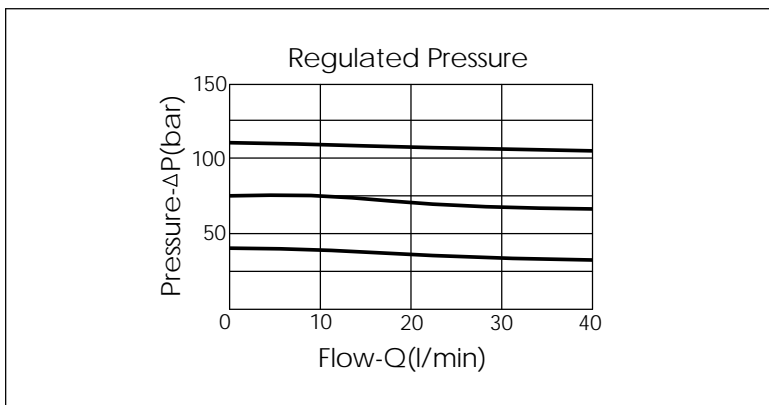
Aluminum Body Pressure Rating: 250 bar  
 Ductile Iron Body Pressure Rating: 350 bar

Rated flow: 40 l/min

Cartridge Valve:  
 Refer to PB11A-X-Y-Z  
 \* Refer to Winner Cartridge Valve Catalog.

|          |                       |
|----------|-----------------------|
| Aluminum | 0.7 kg(WITHOUT VALVE) |
|          | 0.9 kg(INCLUDE VALVE) |

\* If you need the special specification. Please contact us.



| X           | SELECTION FOR P PORT CONTROL  |  |
|-------------|-------------------------------|--|
| <b>11A3</b> | CAVITY ONLY (WITHOUT VALVE)   |  |
| <b>PB0A</b> | PB11A30AL (40 LPM , 7-210bar) |  |
|             |                               |  |
|             |                               |  |

| Y          | SELECTION FOR G PORT |  |
|------------|----------------------|--|
| <b>G02</b> | G 1/4"(Metric)       |  |
| <b>N02</b> | NPT 1/4"(U.S. Units) |  |
|            |                      |  |
|            |                      |  |
|            |                      |  |

| Z        | BODY MATERIAL          |  |
|----------|------------------------|--|
| <b>A</b> | HIGH-STRENGTH ALUMINUM |  |
|          |                        |  |
|          |                        |  |
|          |                        |  |