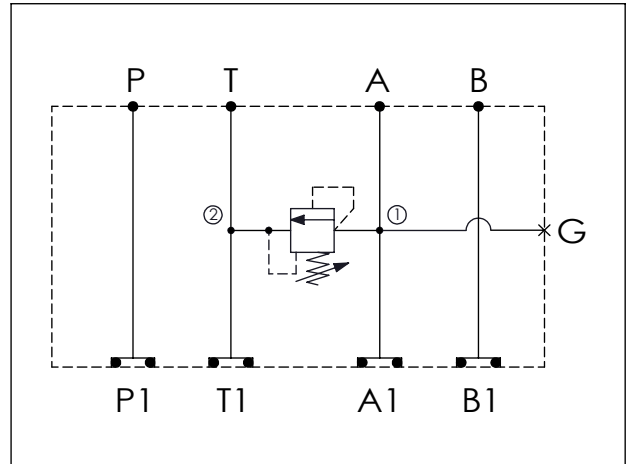


Ordering Code: **MH03RAH-X-Y-Z01**

Stack Height : 44.5mm

UNIT:mm



### TECHNICAL DATA

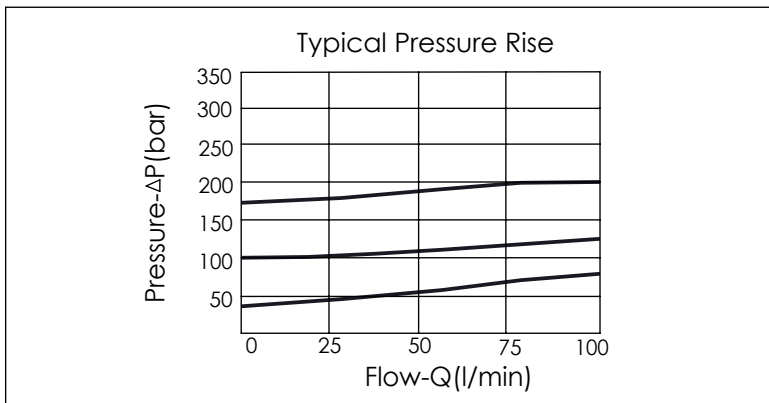
Aluminum Body Pressure Rating: 250 bar  
 Ductile Iron Body Pressure Rating: 350 bar

Rated flow: 40 l/min

Cartridge Valve:  
 Refer to RD10A-X-Y-Z  
 \* Refer to Winner Cartridge Valve Catalog.

Aluminum	0.28 kg(WITHOUT VALVE) 0.45 kg(INCLUDE VALVE)
DUCTILE IRON	0.79 kg(WITHOUT VALVE) 0.96 kg(INCLUDE VALVE)

\* If you need the special specification. Please contact us.



X	SELECTION FOR A PORT CONTROL	
<b>10A2</b>	CAVITY ONLY(WITHOUT VALVE)	
<b>RD5A</b>	RD10A25AL(95LPM,35-210bar)	

Y	SELECTION FOR G PORT	
<b>G02</b>	G 1/4"(Metric)	
<b>N02</b>	NPT 1/4"(U.S. Units)	

Z	BODY MATERIAL	
<b>A</b>	HIGH-STRENGTH ALUMINUM	
<b>S</b>	DUCTILE IRON	