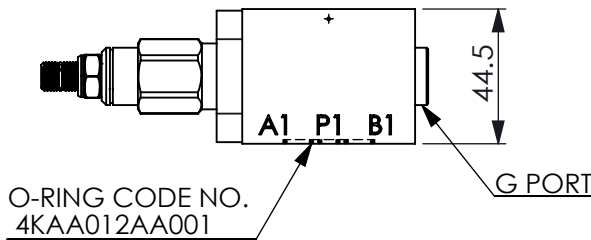
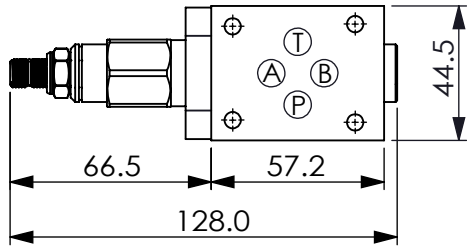
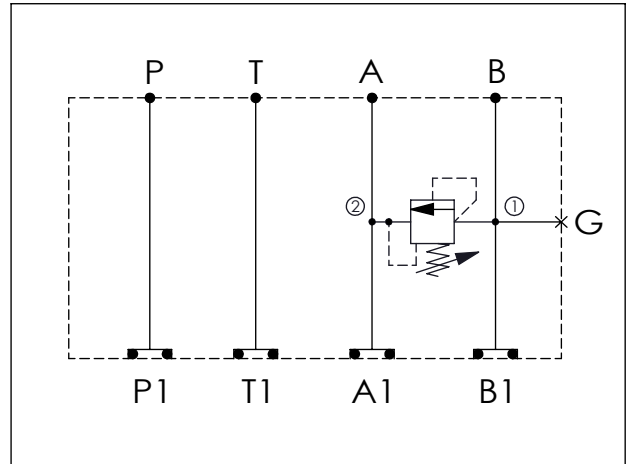


Ordering Code: **MH03RBA-X-Y-Z01**
 Stack Height : 44.5mm



UNIT:mm



TECHNICAL DATA

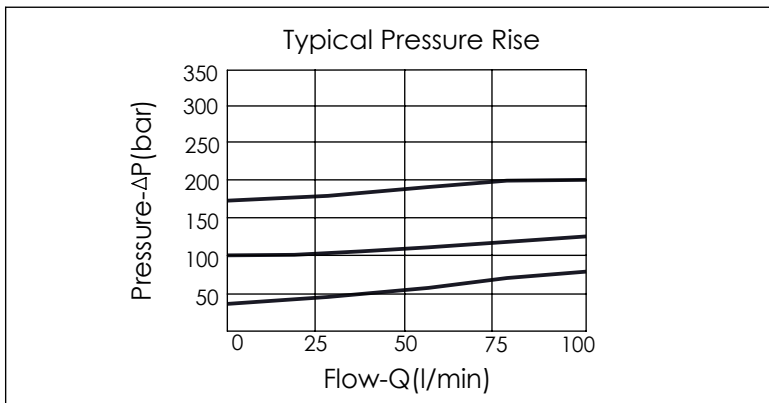
Aluminum Body Pressure Rating: 250 bar
 Ductile Iron Body Pressure Rating: 350 bar

Rated flow: 40 l/min

Cartridge Valve:
 Refer to RD10A-X-Y-Z
 * Refer to Winner Cartridge Valve Catalog.

Aluminum	0.28 kg(WITHOUT VALVE)
	0.45 kg(INCLUDE VALVE)
DUCTILE IRON	0.79 kg(WITHOUT VALVE)
	0.96 kg(INCLUDE VALVE)

* If you need the special specification. Please contact us.



X	SELECTION FOR G PORT	
G02	G 1/4"(Metric)	
N02	NPT 1/4"(U.S. Units)	

Y	SELECTION FOR B PORT CONTROL	
10A2	CAVITY ONLY(WITHOUT VALVE)	
RD5A	RD10A25AL (95LPM,35-210bar)	

Z	BODY MATERIAL	
A	HIGH-STRENGTH ALUMINUM	
S	DUCTILE IRON	