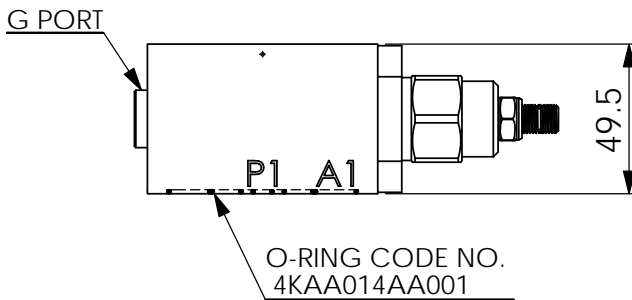
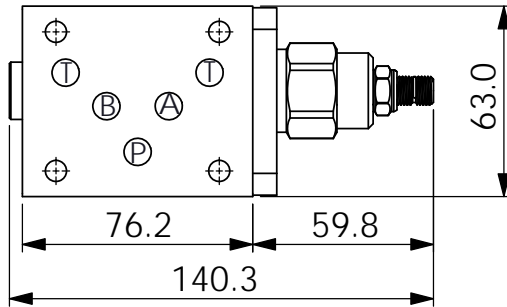
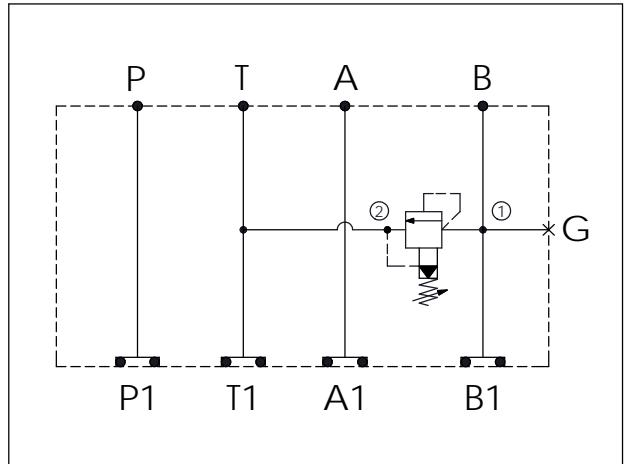


## ISO 05 SANDWICH MANIFOLD

Ordering Code: **MH05RBH-X-Y-Z01**  
 Stack Height : 49.5mm



UNIT:mm



### TECHNICAL DATA

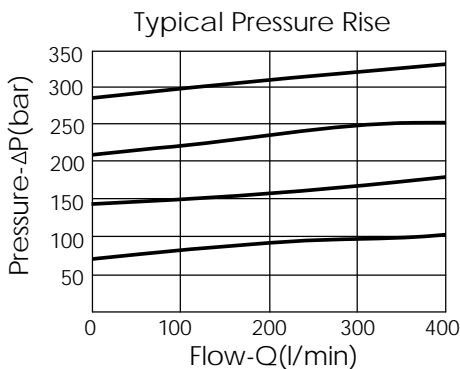
Aluminum Body Pressure Rating: 250 bar  
 Ductile Iron Body Pressure Rating: 350 bar

Rated flow: 80 l/min

Cartridge Valve:  
 Refer to RP3A-X-Y-Z  
 \* Refer to Winner Cartridge Valves Catalog.

Aluminum	0.56 kg(WITHOUT VALVE)
	0.86 kg(INCLUDE VALVE)

\* If you need the special specification.  
 Please contact us.



### X SELECTION FOR G PORT CONTROL

<b>G02</b>	G 1/4"(Metric)	
<b>N02</b>	NPT 1/4"(U.S. Units)	

### Y SELECTION FOR B PORT CONTROL

<b>3A2</b>	CAVITY ONLY(WITHOUT VALVE)	
<b>RP0A</b>	RP3A20AL (200 LPM , 7-210bar)	

### Z BODY MATERIAL

<b>A</b>	HIGH-STRENGTH ALUMINUM	