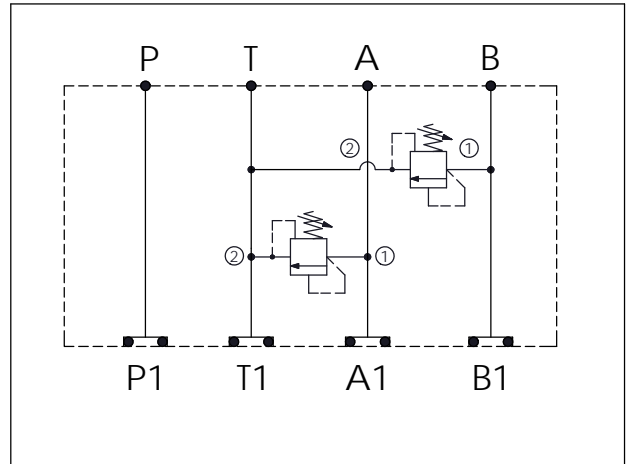


ISO 03 SANDWICH MANIFOLD

Ordering Code: **MH03RDS-X-Y-Z02**

Stack Height : 40.0mm

UNIT:mm



TECHNICAL DATA

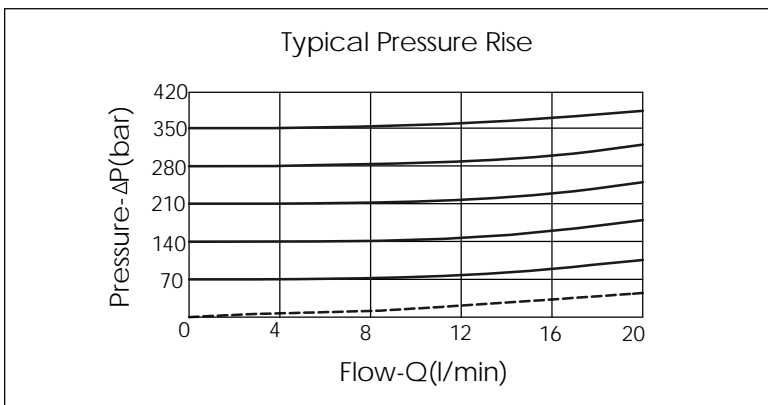
Aluminum Body Pressure Rating: 250 bar
 Ductile Iron Body Pressure Rating: 350 bar

Rated flow: 20 l/min

Cartridge Valve:
 Refer to RD08W-X-Y-Z
 * Refer to Winner Cartridge Valves Catalog.

Aluminum	0.4 kg(WITHOUT VALVES) 0.65 kg(INCLUDE VALVES)
Ductile Iron	1.1 kg(WITHOUT VALVES) 1.35 kg(INCLUDE VALVES)

* If you need the special specification. Please contact us.



X	SELECTION FOR A PORT CONTROL	
08W2	CAVITY ONLY(WITHOUT VALVE)	
RD0A	RD08W20AL (20LPM , 80-210bar)	

Y	SELECTION FOR B PORT CONTROL	
08W2	CAVITY ONLY(WITHOUT VALVE)	
RD0A	RD08W20AL (20LPM , 80-210bar)	

Z	BODY MATERIAL	
A	HIGH-STRENGTH ALUMINUM	
S	DUCTILE IRON	