

## ISO 03 SANDWICH MANIFOLD

Ordering Code: **MH03RDT-X-Y-Z01**

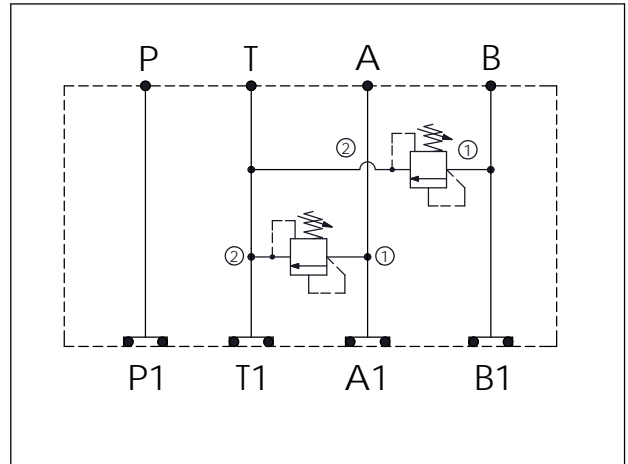
Stack Height : 44.5mm

Dimensions: 83.5, 57.2, 83.5, 224.2, 44.5

Ports: A, B, P, T, A1, P1, B1

O-RING CODE NO. 4KAA012AA001

UNIT:mm



### TECHNICAL DATA

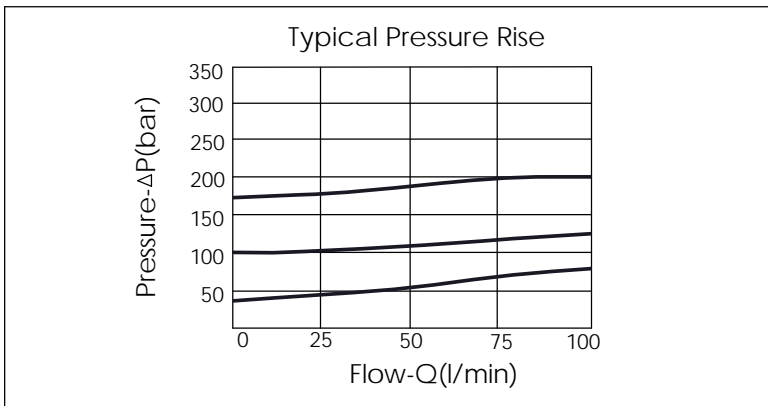
Aluminum Body Pressure Rating: 250 bar  
 Ductile Iron Body Pressure Rating: 350 bar

Rated flow: 40 l/min

Cartridge Valve:  
 Refer to RD10A-X-Y-Z  
 \* Refer to Winner Cartridge Valves Catalog.

Aluminum	0.45 kg(WITHOUT VALVES) 0.8 kg(INCLUDE VALVES)
Ductile Iron	1.3 kg(WITHOUT VALVES) 1.65 kg(INCLUDE VALVES)

\* If you need the special specification. Please contact us.



X	SELECTION FOR A PORT CONTROL
10A2	CAVITY ONLY(WITHOUT VALVE)
RD5A	RD10A25AL (95LPM , 35-210bar)

Y	SELECTION FOR B PORT CONTROL
10A2	CAVITY ONLY(WITHOUT VALVE)
RD5A	RD10A25AL (95LPM , 35-210bar)

Z	BODY MATERIAL
A	HIGH-STRENGTH ALUMINUM
S	DUCTILE IRON