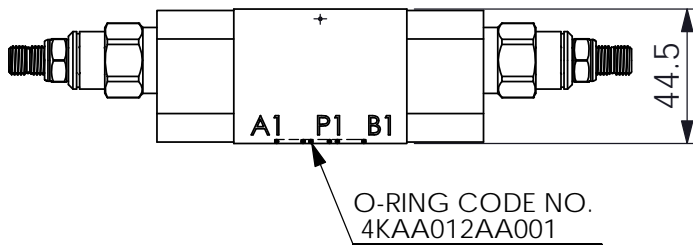
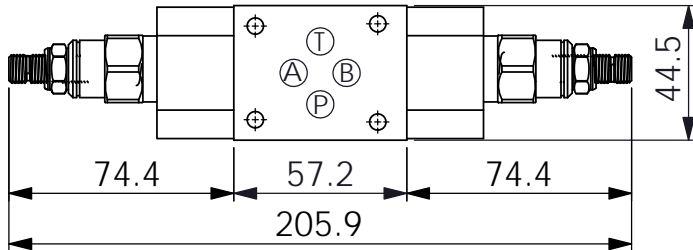
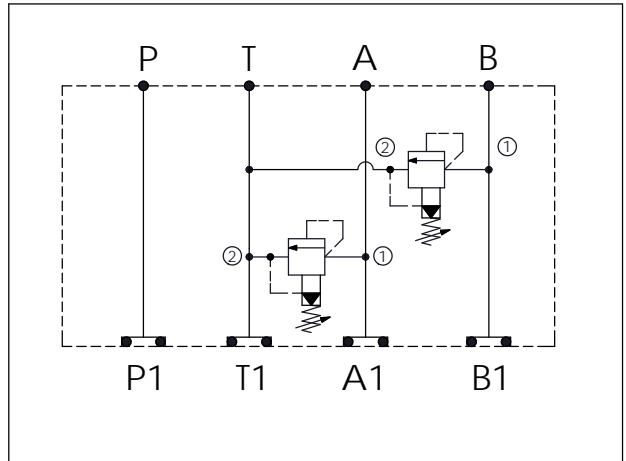


ISO 03 SANDWICH MANIFOLD

Ordering Code: MH03RDT-X-Y-Z01
Stack Height : 44.5mm



UNIT:mm



TECHNICAL DATA

Aluminum Body Pressure Rating: 250 bar

Ductile Iron
Body Pressure Rating: 350 bar

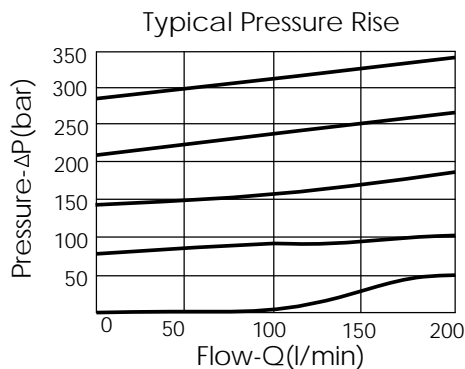
Rated flow: 40 l/min

Cartridge Valve:
Refer to RP10A-X-Y-Z

* Refer to Winner Cartridge Valves Catalog.

Aluminum	0.45 kg(WITHOUT VALVES)
	0.8 kg(INCLUDE VALVES)
Ductile Iron	1.3 kg(WITHOUT VALVES)
	1.65 kg(INCLUDE VALVES)

* If you need the special specification.
Please contact us.



X SELECTION FOR A PORT CONTROL

10A2 CAVITY ONLY(WITHOUT VALVE)

RP0A RP10A20AL (95LPM , 7-210bar)

Y SELECTION FOR B PORT CONTROL

10A2 CAVITY ONLY(WITHOUT VALVE)

RP0A RP10A20AL (95LPM , 7-210bar)

Z BODY MATERIAL

A HIGH-STRENGTH ALUMINUM

S DUCTILE IRON