

ISO 05 SANDWICH MANIFOLD

Ordering Code: **MH05RDT-X-Y-Z01**

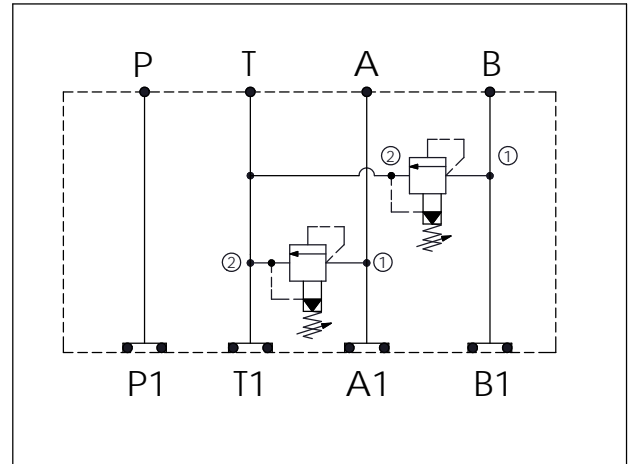
Stack Height : 49.5mm

Dimensions: 77.3, 76.2, 77.3, 230.7, 63.0, 49.5

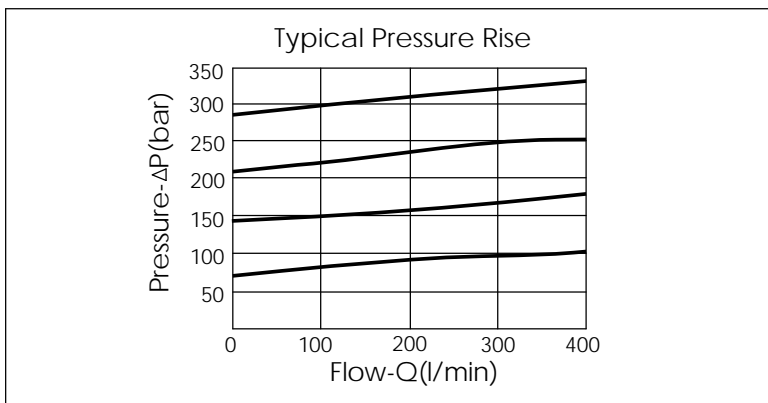
Ports: P, T, A, B, P1, T1, A1, B1

O-RING CODE NO. 4KAA014AA001

UNIT:mm



TECHNICAL DATA	
Aluminum Body Pressure Rating:	250 bar
Ductile Iron Body Pressure Rating:	350 bar
Rated flow:	80 l/min
Cartridge Valve:	Refer to RP3A-X-Y-Z
	* Refer to Winner Cartridge Valves Catalog.
Aluminum	0.85 kg(WITHOUT VALVES) 1.45 kg(INCLUDE VALVES)
Ductile Iron	2.45 kg(WITHOUT VALVES) 3.05 kg(INCLUDE VALVES)
* If you need the special specification. Please contact us.	



X	SELECTION FOR A PORT CONTROL
3A2	CAVITY ONLY(WITHOUT VALVE)
RP0A	RP3A20AL (200LPM , 7-210bar)

Y	SELECTION FOR B PORT CONTROL
3A2	CAVITY ONLY(WITHOUT VALVE)
RP0A	RP3A20AL (200LPM , 7-210bar)

Z	BODY MATERIAL
A	HIGH-STRENGTH ALUMINUM
S	DUCTILE IRON