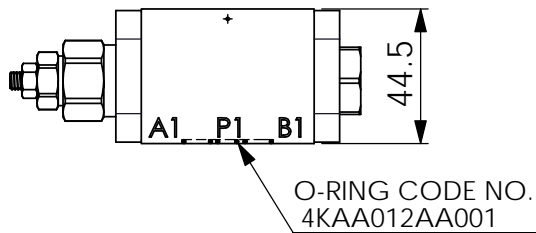
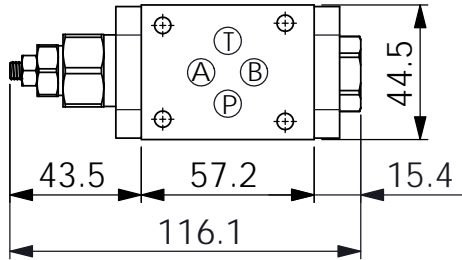
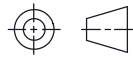


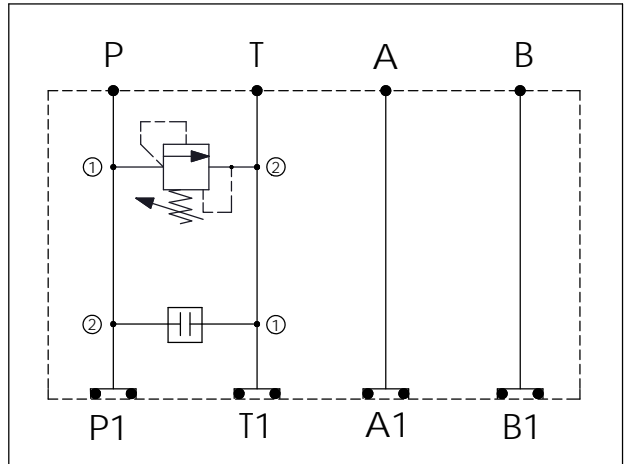
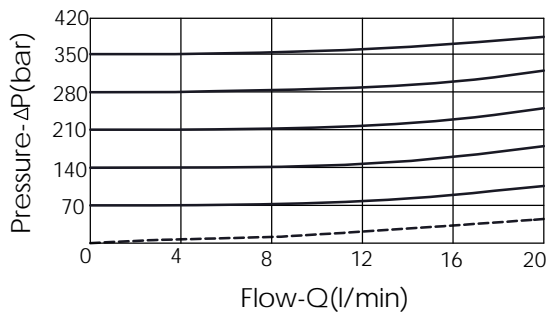
Ordering Code:	MH03RPD-X-Y-Z01
Stack Height :	44.5mm



UNIT:mm



Typical Pressure Rise



TECHNICAL DATA

Aluminum Body Pressure Rating: 250 bar
 Ductile Iron Body Pressure Rating: 350 bar

Rated flow: 20 l/min

Cartridge Valve:
 Refer to RD08W-X-Y-Z
 CP-08W-Y-Z

* Refer to Winner Cartridge Valves Catalog.

Aluminum	0.31 kg(WITHOUT VALVES) 0.52 kg(INCLUDE VALVES)

* If you need the special specification. Please contact us.

X	SELECTION FOR RELIEF VALVE (PORT ① TO ②, NEAR "A" PORT SIDE)	
08W2	CAVITY ONLY(WITHOUT VALVE)	
RD0A	RD08W20AL(20LPM,80-210bar)	

Y	SELECTION FOR SOLENOID VALVES (PORT ② TO ①, NEAR "B" PORT SIDE)	
08W2	CAVITY ONLY(WITHOUT VALVE)	
CP00	CP08W2H00NN(3/4"-16UNF-2B, All Ports Blocked)	

Z	BODY MATERIAL	
A	HIGH-STRENGTH ALUMINUM	