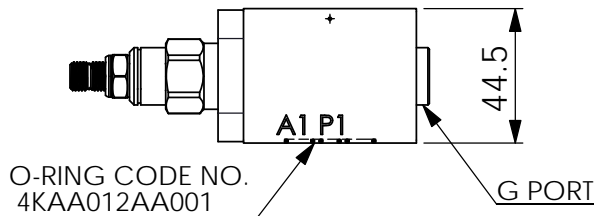
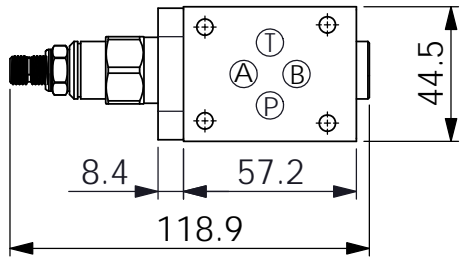
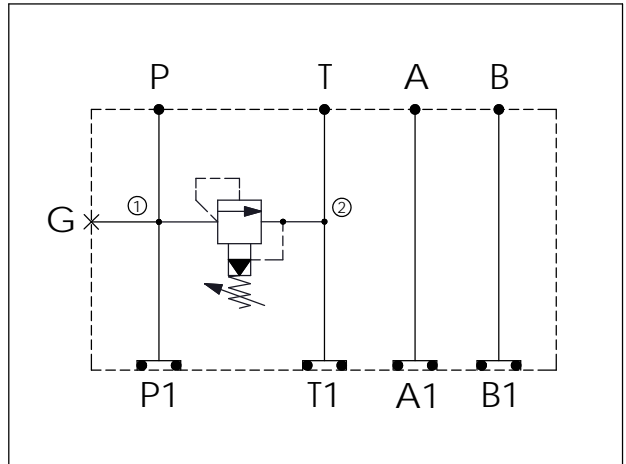
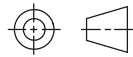


Ordering Code: <b>MH03RPH-X-Y-Z01</b>
Stack Height : 44.5mm



UNIT:mm



### TECHNICAL DATA

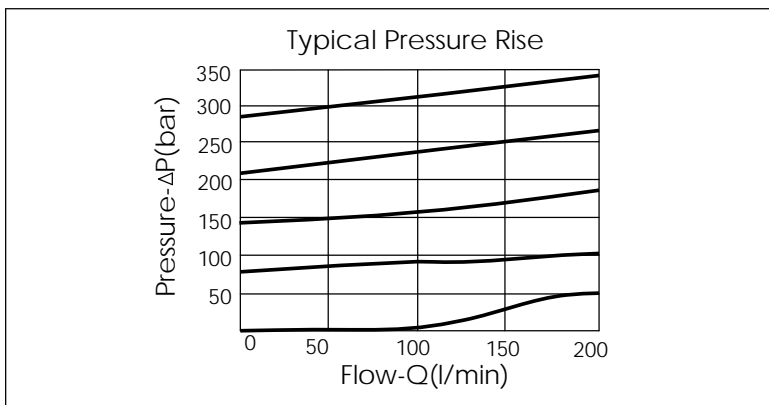
Aluminum Body Pressure Rating: 250 bar  
 Ductile Iron Body Pressure Rating: 350 bar

Rated flow: 40 l/min

Cartridge Valve:  
 Refer to RP10A-X-Y-Z  
 \* Refer to Winner Cartridge Valve Catalog.

Aluminum	0.28 kg(WITHOUT VALVE)
	0.43 kg(INCLUDE VALVE)
Ductile Iron	0.8 kg(WITHOUT VALVE)
	0.95 kg(INCLUDE VALVE)

\* If you need the special specification. Please contact us.



<b>X</b>	<b>SELECTION FOR P PORT CONTROL</b>	
<b>10A2</b>	CAVITY ONLY(WITHOUT VALVE)	
<b>RPOA</b>	RP10A20AL (95LPM,7~210bar)	

<b>Y</b>	<b>SELECTION FOR G PORT</b>	
<b>G02</b>	G 1/4"(Metric)	
<b>N02</b>	NPT 1/4"(U.S. Units)	

<b>Z</b>	<b>BODY MATERIAL</b>	
<b>A</b>	HIGH-STRENGTH ALUMINUM	
<b>S</b>	DUCTILE IRON	