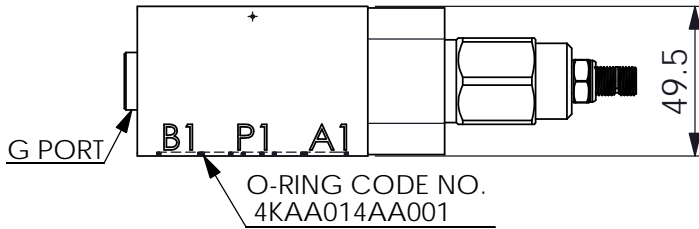
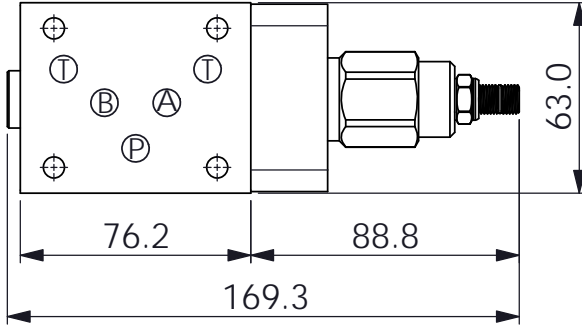
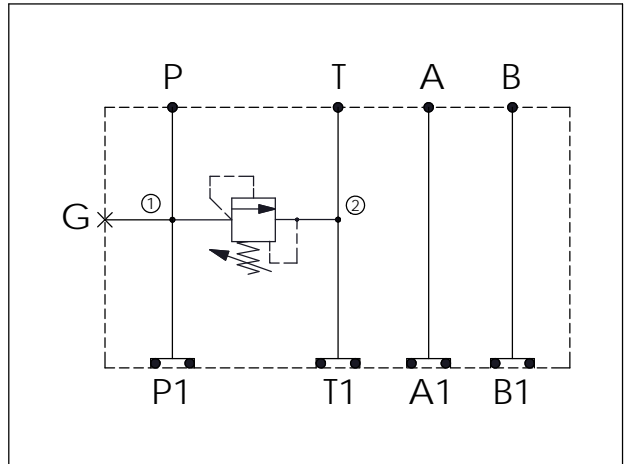
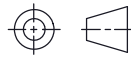


## ISO 05 SANDWICH MANIFOLD

Ordering Code: <b>MH05RPH-X-Y-Z01</b>
Stack Height : 49.5mm



UNIT:mm



### TECHNICAL DATA

Aluminum Body Pressure Rating: 250 bar

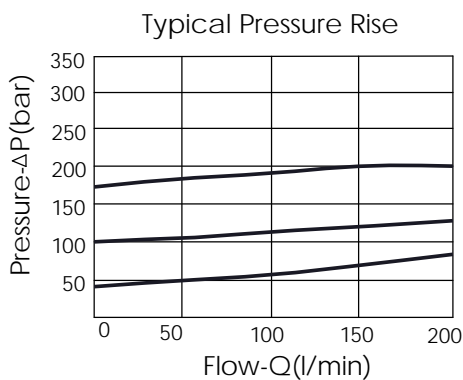
Ductile Iron Body Pressure Rating: 350 bar

Rated flow: 80 l/min

Cartridge Valve:  
Refer to RD3A-X-Y-Z  
\* Refer to Winner Cartridge Valves Catalog.

Aluminum	0.7 kg(WITHOUT VALVE) 1.0 kg(INCLUDE VALVE)
Ductile Iron	2.0 kg(WITHOUT VALVE) 2.3 kg(INCLUDE VALVE)

\* If you need the special specification. Please contact us.



### X SELECTION FOR P PORT CONTROL

<b>3A2</b>	CAVITY ONLY(WITHOUT VALVE)
<b>RD5A</b>	RD3A25AL (200 LPM , 35-210bar)

### Y SELECTION FOR G PORT

<b>G02</b>	G 1/4"(Metric)
<b>N02</b>	NPT 1/4"(U.S. Units)

### Z BODY MATERIAL

<b>A</b>	HIGH-STRENGTH ALUMINUM
<b>S</b>	DUCTILE IRON