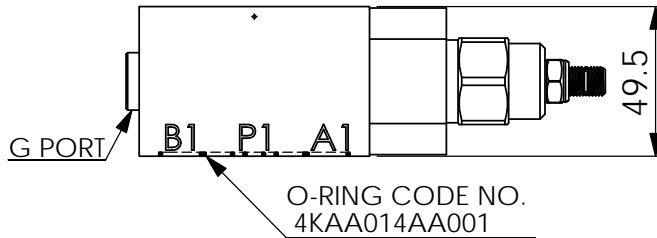
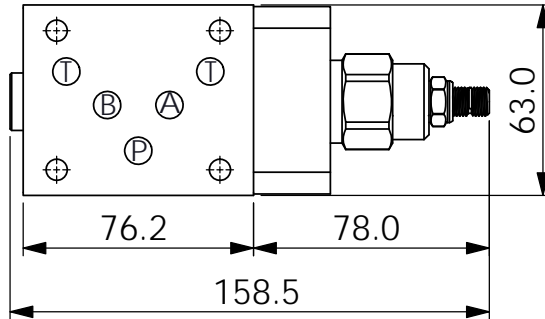
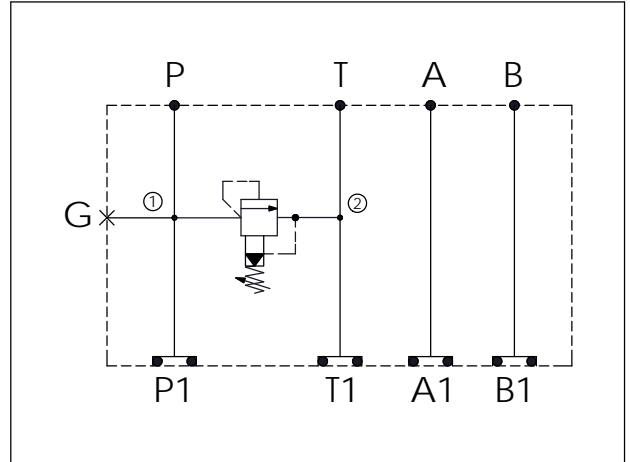
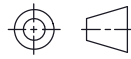


ISO 05 SANDWICH MANIFOLD

Ordering Code: MH05RPH-X-Y-Z01
Stack Height : 49.5mm



UNIT:mm



TECHNICAL DATA

Aluminum Body Pressure Rating: 250 bar

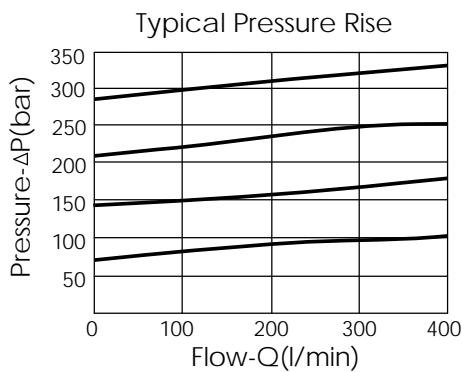
Ductile Iron Body Pressure Rating: 350 bar

Rated flow: 80 l/min

Cartridge Valve:
Refer to RP3A-X-Y-Z
* Refer to Winner Cartridge Valves Catalog.

Aluminum	0.7 kg(WITHOUT VALVE) 1.0 kg(INCLUDE VALVE)
Ductile Iron	2.0 kg(WITHOUT VALVE) 2.3 kg(INCLUDE VALVE)

* If you need the special specification. Please contact us.



X SELECTION FOR P PORT CONTROL

3A2 CAVITY ONLY(WITHOUT VALVE)

RP0A RP3A20AL (200 LPM , 7-210bar)

Y SELECTION FOR G PORT CONTROL

G02 G 1/4"(Metric)

N02 NPT 1/4"(U.S. Units)

Z BODY MATERIAL

A HIGH-STRENGTH ALUMINUM

S DUCTILE IRON