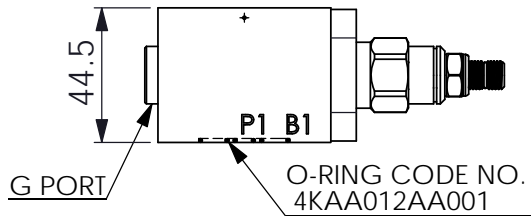
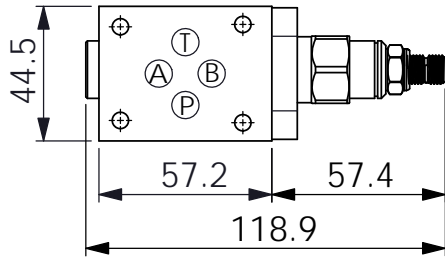
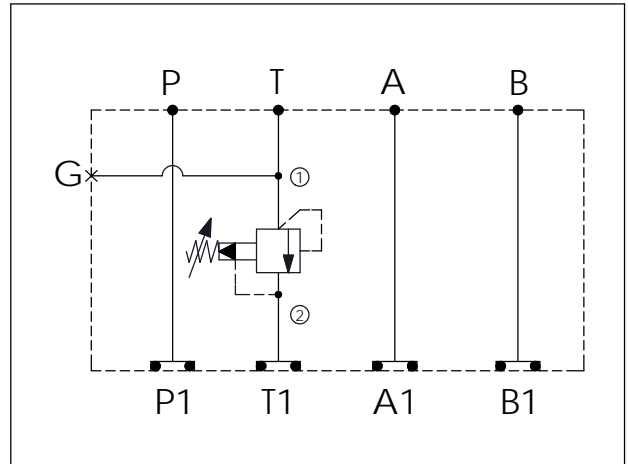


Ordering Code: MH03RTH-X-Y-Z01
Stack Height : 44.5mm



UNIT:mm



TECHNICAL DATA

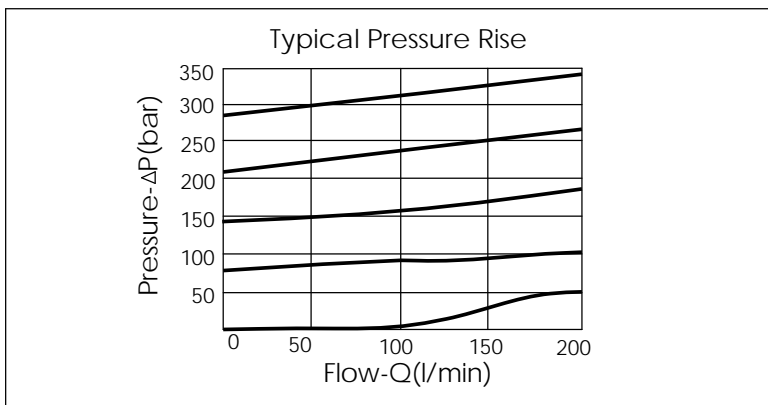
Aluminum Body Pressure Rating: 250 bar
 Ductile Iron Body Pressure Rating: 350 bar

Rated flow: 40 l/min

Cartridge Valve:
 Refer to RP10A-X-Y-Z
 * Refer to Winner Cartridge Valve Catalog.

Aluminum	0.28 kg(WITHOUT VALVE)
	0.42 kg(INCLUDE VALVE)
DUCTILE IRON	1.51 kg(WITHOUT VALVE)
	1.65 kg(INCLUDE VALVE)

* If you need the special specification. Please contact us.



X	SELECTION FOR T PORT CONTROL	
10A2	CAVITY ONLY(WITHOUT VALVE)	
RP0A	RP10A20AL(95LPM,7-210bar)	

Y	SELECTION FOR G PORT	
G02	G 1/4"(Metric)	
N02	NPT 1/4"(U.S. Units)	

Z	BODY MATERIAL	
A	HIGH-STRENGTH ALUMINUM	
S	DUCTILE IRON	