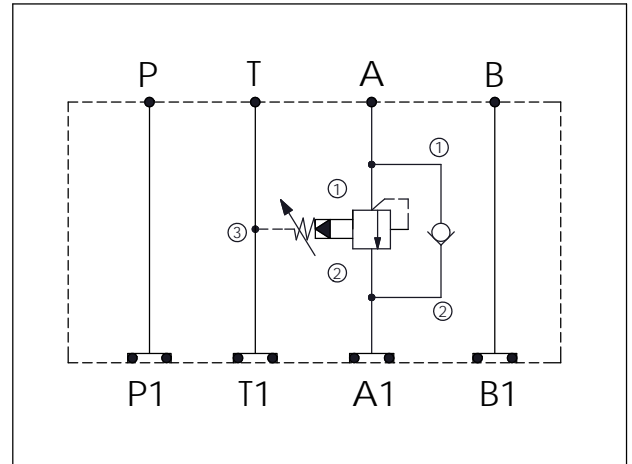


## ISO 05 SANDWICH MANIFOLD

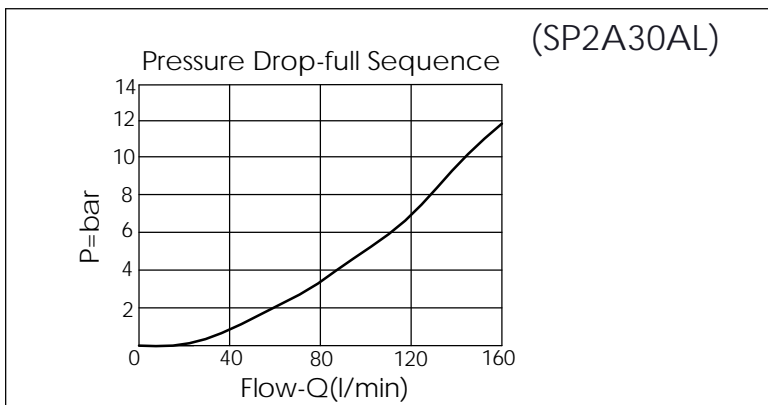
Ordering Code: **MH05SAI-X-Y-Z 03**

Stack Height :63.0mm

UNIT:mm



TECHNICAL DATA	
Aluminum Body Pressure Rating:	250 bar
Ductile Iron Body Pressure Rating:	350 bar
Rated flow:	80 l/min
Cartridge Valve:	Refer to SP2A-X-Y-Z CV5A-X-Y-Z
* Refer to Winner Cartridge Valves Catalog.	
Aluminum	0.95 kg(WITHOUT VALVES) 1.45 kg(INCLUDE VALVES)
* If you need the special specification. Please contact us.	



X	SELECTION FOR A PORT CONTROL
2A3	CAVITY ONLY(WITHOUT VALVE)
SP0A	SP2A30AL (120LPM , 7-210bar)

Y	SELECTION FOR CHECK VALVE
5A2	CAVITY ONLY(WITHOUT VALVE)
CV20	CV5A2120N (120LPM , 2.0bar)

Z	BODY MATERIAL
A	HIGH-STRENGTH ALUMINUM