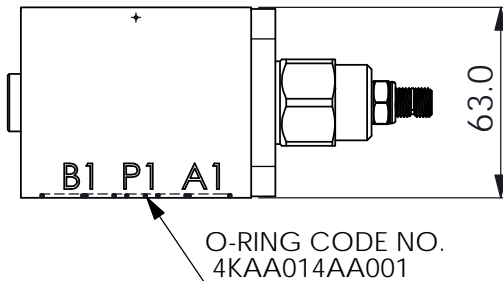
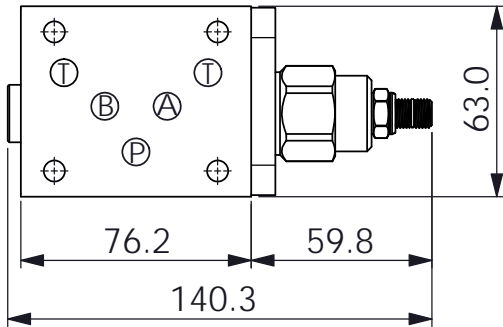


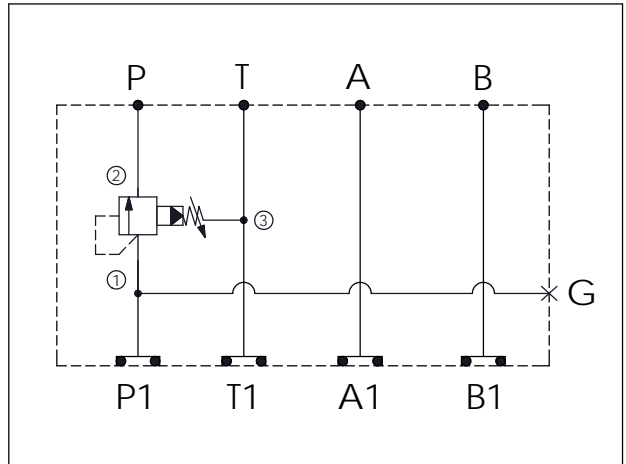
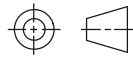
## ISO 05 SANDWICH MANIFOLD

Ordering Code: **MH05SPW-X-Y-Z03**

Stack Height : 63.0mm



UNIT:mm



### TECHNICAL DATA

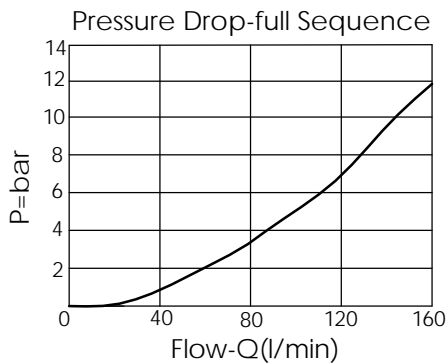
Aluminum Body Pressure Rating: 250 bar  
 Ductile Iron Body Pressure Rating: 350 bar

Rated flow: 80 l/min

Cartridge Valve:  
 Refer to SP2A-X-Y-Z  
 \* Refer to Winner Cartridge Valve Catalog.

Aluminum	0.75 kg(WITHOUT VALVE)
	1.05 kg(INCLUDE VALVE)
Ductile Iron	2.1 kg(WITHOUT VALVE)
	2.4 kg(INCLUDE VALVE)

\* If you need the special specification. Please contact us.



### X SELECTION FOR P PORT CONTROL

**2A3** CAVITY ONLY (WITHOUT VALVE)

**SP0A** SP2A30AL (120 LPM , 7-210bar)

### Y SELECTION FOR G PORT

**G02** G 1/4"(Metric)

**N02** NPT 1/4"(U.S. Units)

### Z BODY MATERIAL

**A** HIGH-STRENGTH ALUMINUM

**S** DUCTILE IRON