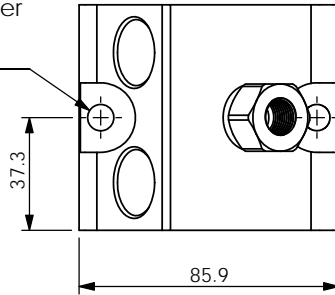


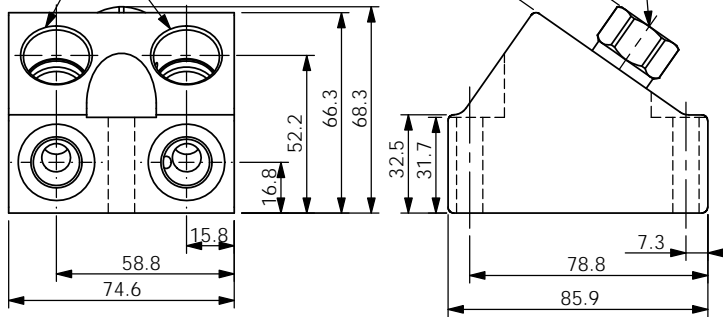
Ordering Code: **ML-60-CDK-X-Y-Z-A41**

Mounting Holes:
Ø8.7mm. diameter
through hole.
2 places.

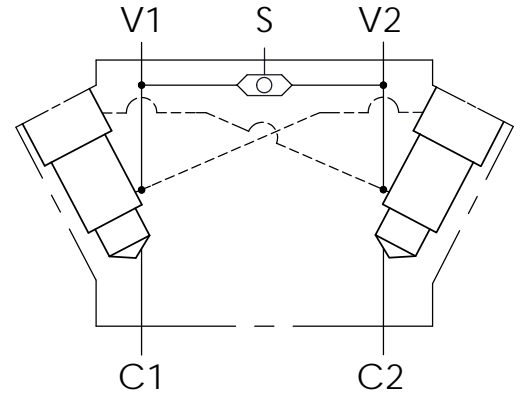
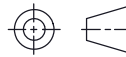


11A3 Cavity
Locating Shoulder
Depth 17.5 mm.
2 places.

Shuttle port "S"
in end of hex.



UNIT:mm



TECHNICAL DATA

Aluminum Body Pressure Rating: 210 bar
Ductile Iron
Body Pressure Rating: 350 bar

Cavity:
Refer to 11A3

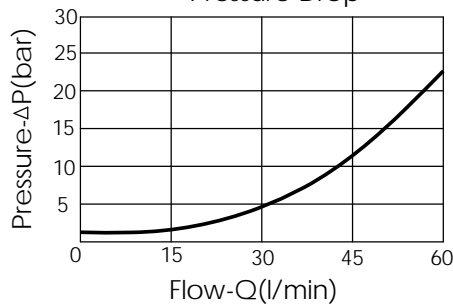
Shuttle valve:
Refer to LS13A20NG02

* Refer to Winner Cartridge Valves Catalog.

Aluminum	0.72 kg(WITHOUT CONTERBALAN VALVE) (WITH SHUTTLE VALVE)
----------	--

* If you need the special specification.
Please contact us.

Free Flow or Piloted Open
Pressure Drop



X CARTRIDGE VALVES SELECTION

11A3	WITHOUT VALVE
CB0J	CB11A30JL , 10:1 , 350bar
CB4J	CB11A34JL , 4.5:1 , 350bar

The selection is only example. Please refer to Winner Cartridge Program and to select the appropriate valves and manifolds assembly in accordance with request function (flow 、 pressure 、 ... etc.)

Y CARTRIDGE VALVES SELECTION

11A3	WITHOUT VALVE
CB0J	CB11A30JL , 10:1 , 350bar
CB4J	CB11A34JL , 4.5:1 , 350bar

The selection is only example. Please refer to Winner Cartridge Program and to select the appropriate valves and manifolds assembly in accordance with request function (flow 、 pressure 、 ... etc.)

PORT SIZE

Z	PORT	PORT	PORT
	1	2	S
G03	G 3/8"	G 3/8"	G 1/4"