

TECHNICAL DATA

Aluminum Body Pressure Rating: 210 bar
Ductile Iron
Body Pressure Rating: 350 bar

Cavity:
Refer to 11A3

* Refer to Winner Cartridge Valves Catalog.

| | |
|--------------|-------------------------|
| Ductile Iron | 2.11 kg(WITHOUT VALVES) |
| | |

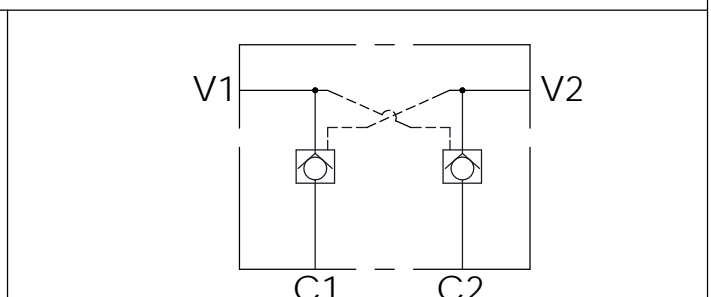
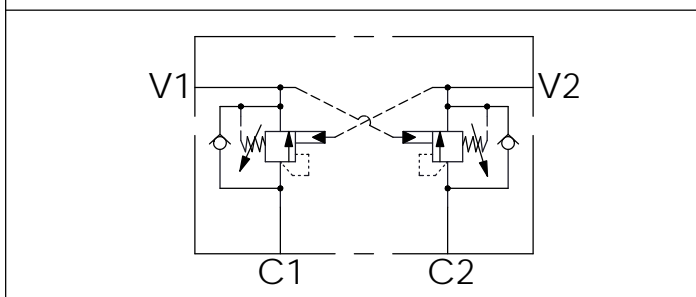
* If you need the special specification.
Please contact us.

| Z | PORT SIZE | | |
|-----|----------------|----------------|--|
| | PORTS V1,V2 | PORTS C1,C2 | |
| G02 | G 1/4" | G 1/4" | |
| G03 | G 3/8" | G 3/8" | |
| G04 | G 1/2" | G 1/2" | |
| A02 | 1/4"NPT | 1/4"NPT | |
| A03 | 3/8"NPT | 3/8"NPT | |
| S06 | SAE 6 | SAE 6 | |
| S08 | SAE 8 | SAE 8 | |

| X | SELECTION FOR V1 PORT CONTROL | |
|------|-------------------------------|--|
| 11A3 | CAVITY ONLY(WITHOUT VALVE) | |
| CB3H | CB11A33HL (3:1 , 280bar) | |
| CO20 | CO11A3020N (2.0bar) | |

| Y | SELECTION FOR V2 PORT CONTROL | |
|------|-------------------------------|--|
| 11A3 | CAVITY ONLY(WITHOUT VALVE) | |
| CB3H | CB11A33HL (3:1 , 280bar) | |
| CO20 | CO11A3020N (2.0bar) | |

HYDRAULIC CIRCUITS(WITH VALVES)



Ordering Code: **ML-60-CDW-CB3H-CB3H-S01**

Ordering Code: **ML-60-CDW-CO20-CO20-S01**