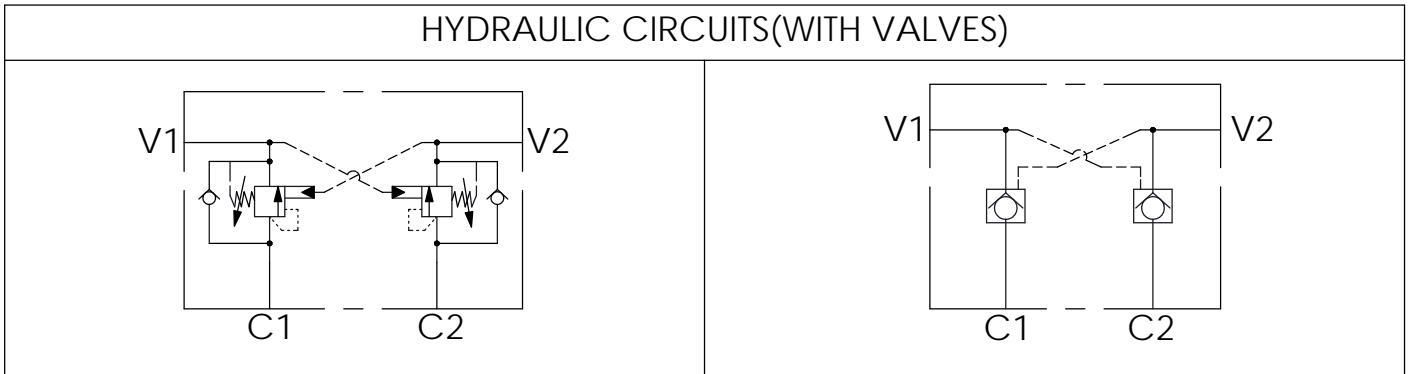


TECHNICAL DATA	
Aluminum Body Pressure Rating:	210 bar
Ductile Iron Body Pressure Rating:	350 bar
Cavity:	Refer to 19A3
* Refer to Winner Cartridge Valves Catalog.	
Aluminum	7.29 kg(WITHOUT VALVES)
* If you need the special specification. Please contact us.	

Y	SELECTION FOR V2 PORT CONTROL
19A3	CAVITY ONLY(WITHOUT VALVE)
CBCH	CB19A3CHL (3:1 , 280bar)
CO20	CO19A3020N (2.0bar)
The selection is only example. Please refer to Winner Cartridge Program and to select the appropriate valves and manifolds assembly in accordance with request function (flow 、 pressure 、 ... etc.)	

X	SELECTION FOR V1 PORT CONTROL						
19A3	CAVITY ONLY(WITHOUT VALVE)						
CBCH	CB19A3CHL (3:1 , 280bar)						
CO20	CO19A3020N (2.0bar)						
Z	PORT SIZE						
	<table border="1"> <thead> <tr> <th>PORTS</th> <th>PORTS</th> </tr> <tr> <th>V1,V2</th> <th>C1,C2</th> </tr> </thead> <tbody> <tr> <td>F60</td> <td>1 1/2" Code 62 4-Bolt Flang Pattern</td> </tr> </tbody> </table>	PORTS	PORTS	V1,V2	C1,C2	F60	1 1/2" Code 62 4-Bolt Flang Pattern
PORTS	PORTS						
V1,V2	C1,C2						
F60	1 1/2" Code 62 4-Bolt Flang Pattern						



Ordering Code: **ML-480-CDW-CBCH-CBCH-A01**

Ordering Code: **ML-480-CDW-CO20-CO20-A01**