

TECHNICAL DATA

Aluminum Body Pressure Rating: 210 bar
Ductile Iron Body Pressure Rating: 350 bar

Cavity:
Refer to 2A3
5A2

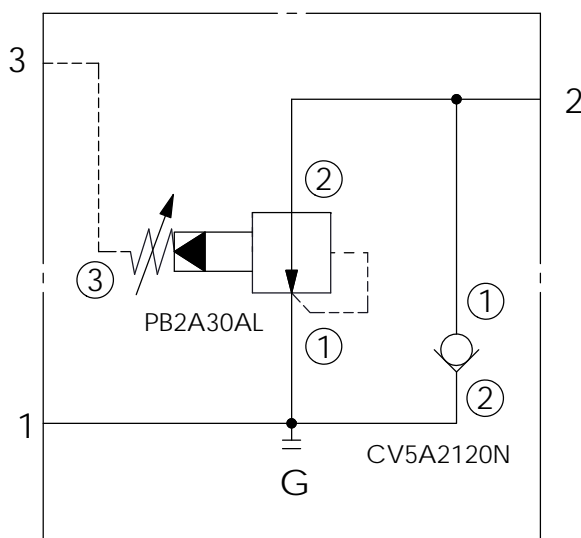
* Refer to Winner Cartridge Valves Catalog.

Aluminum	0.8 kg(WITHOUT VALVES)

* If you need the special specification. Please contact us.

TYPICAL CIRCUIT:

PORT 2 TO PORT 1
REDUCING



X CARTRIDGE VALVES SELECTION

2A3	CAVITY ONLY(WITHOUT VALVE)	
PB0A	PB2A30AL (80LPM , 7-210bar)	

The selection is only example. Please refer to Winner Cartridge Program and to select the appropriate valves and manifolds assembly in accordance with request function (flow 、 pressure 、 ... etc.)

Y SELECTION FOR SOLENOID VALVES (REFER TO CV5A-X-Y-Z)

5A2	CAVITY ONLY(WITHOUT VALVE)	
CV20	CV5A2120N(120LPM,2.0bar)	

The selection is only example. Please refer to Winner Cartridge Program and to select the appropriate valves and manifolds assembly in accordance with request function (flow 、 pressure 、 ... etc.)

PORT SIZE

Z	PORTS	PORT	PORT	
	1,2	3	G	
G04AG	G 1/2"	G 1/4"	G 1/4"	